



*Mizoram State Roads II- Regional Transport Connectivity Project
(funded by The World Bank)*



SOCIAL MANAGEMENT FRAMEWORK

JANUARY 2014

TABLE OF CONTENTS

1.0	Project Dinmun Tlangpui	1
2.0	Mizoram mipuite dinmun tlangpui	2
3.0	Group I project roads huam chungga Mipui khawih thilte.....	4
4.0	Dan leh hrai chungchang	7
5.0	Social Management Framework (Mipuite harsatna chhawkdan tur).....	9
6.0	SIA and R&IPDP buatsaihdan.....	21
7.0	Hmeichhia leh mipa dinmun zirchianna (Gender Analysis).....	22
8.0	Tualchung sumdawna leh tanpuina awm thei chungchang	23
9.0	HIV chungchang inhrilh hriatna	24
10.0	Mipuite biakrawnna leh an tel vedan tur	25
11.0	Hriattirna puanchhuah chungchang	26
12.0	A buaipuitute lam	27
13.0	Training and Capacity Building.....	31
14.0	Mipuite vuivaina thawidamdan tur	32
15.0	Hnathawh vil leh endik dan tur (Monitoring and Evaluation (M&E)).....	35
16.0	Resettlement Budget.....	36
17.0	SMF siam that/tih danglamdan tur	36

Thil pawimawh thil tel te.

1	Census & Socio-economic questionnaire	
2	Tualchung insumdawn tawna leh an nunphung chawikandan tur	
3	HIV/AIDS dinmun leh a venna lam.	
4a	Mipuite biakrawnna a hriatturte.	
4b	Mipuite biakrawndan tur	
5	Rawtna, selna leh mipuite harsatna dawnsawndan tur.	
6	Reporting	

Lehkha pawimawh thil tel dang.

SMF buatsaih laia mipuite biakrawnna inkhawm thurelte (Minutes of the Workshop on Stakeholder’s Consultation on Environment and Social Management Framework of MSRP II and list of attendants)

THIL LAM TAWI

AE	Assistant Engineer
BSR	Basic Schedule Rates
CADC	Chakma Autonomous District Council
CPR	Common Property Resource
CSC	Construction Supervision Consultant
DAPCU	District AIDS Prevention and Control Units
DPR	Detailed Project Report
E&S	Environment and Social
EC	Environmental Clearance
EIA	Environment Impact Assessment
EMP	Environment Management Plan
EP	Eligible Person
GRC	Grievance Redressal Committee
GRM	Grievance Redressal Mechanism
HIV/AIDS	Human Immunodeficiency Virus/ Acquired Immunodeficiency Syndrome
LA	Land Acquisition
M&E	Monitoring and Evaluation
MAW	Minimum Agricultural Wages
MEH	Minimum Economic Holding
MHIP	MizoHmeichheInsuihkawn Pawl
MGNREGA	Mahatma Gandhi National Rural Employment Guarantee Act
MoEF	Ministry of Environment and Forest
MSACS	Mizoram State AIDS Control Society
MSRP	Mizoram State Roads Project
NABARD	National Bank for Agriculture and Rural Development
NE	North East
NGO	Non-Government Organization
NH	National Highways
NREGA	National Rural Employment Guarantee Act
NRLM	National Rural Livelihood Mission
NRRP	National Rehabilitation and Resettlement Policy
NTHs	Non-title holders
PAF	Project Affected Family
PAH	Project Affected Household
PAP	Project Affected Person
PBG	Project Beneficiary Group
PD	Project Director
PDP	Project Displaced Person
PIU	Project Implementation Unit
PLHIV	People Living with HIV

PMRY	PradhanMantriRojgarYojana
PWD	Public Works Department
R&IPDP	Resettlement and Indigenous Peoples Development Plan
R&R	Resettlement and Rehabilitation
RAP	Resettlement Action Plan
ROW	Right of Way
RRM	Resettlement and Rehabilitation Manager
RSMP	Road Sector Modernization Plan
SCHM	Suggestion and Complaint Handling Mechanism
SDE	Sub-Divisional Engineer
SDS	Social Development Specialist
SGSY	Swarnajayanti Gram SwarajYojana
SHG	Self Help Group
SIA	Social Impact Assessment
SLAO	Special Land Acquisition Officer
SMF	Social Management Framework
SMSes	Short Message Services
ToR	Terms of Reference
TSU	Technical Support Units
U/s	Under Section
ULBs	Urban Local Bodies
VC	Village Council
VCP	Village Council President
WHH	Women Headed Household
YMA	Young Mizo Association
ZRM	ZoramUpa Pawl

1.0 Project Dinhmun Tlangpui

Mizoram hi sq Km 21081 a zau niin India hmarchhak, 22° 19' to 24° 19' North latitudes leh 92° 16' to 93° 26' East longitudes inkara awm a ni a. Khawchhak lamah Myanmar a ri a, Hmar lamah Manipur leh Assam te riin khawthlang lamah Tripura leh Bangladesh te a ri bawk a. Chhim lamah Myanmar bawk a ri leh a ni. Myanmar leh Bangladesh nena ramri thui zawng hi KM 722 lai a ni a, a ram pumpui hi a dung KM 277 leh a vang KM 121 a thui a ni..

Mizoram boruak hi tlangram tih takah a nuam em em mai a, nipuia a lum lutuk lova, thlasikah a vawt lutuk hek lo. Thlasik lai chuan temperature hi 11° C - 21° C a ni tlangpui a, niupui lain 20° C - 29° C vel a ni bawk thin. Tin, State pumpui hian fur lain monsoon ruahpui a dawng bawk thin a ni. Fur lai chuan ruah a tam thin hle a, May thla atanga September thla thleng hian Aizawl khawpui chuan ruahtui 208 cm vel a dawng thin a ni. Mizoram Khuanuin a duandan hi a mawiin a nuam em em mai a, thing leh mau chi hrang hrang bakah nungcha chi hrang hrang an tam em em a ni. Tropical regiona awm chi thlai, thing leh maute chu Mizoramah hian a kim deuhthaw hial a ni.

The Government of India chuan Mizoramah kawngpui laih a nih theih nan World Bank tanpuina a dil a, kawng laih tura ruahman te chuan ram chhung inkalpawhna mai bakah ram pawn, Myanmar leh Bangladesh te nena inkalpawhna kawng tha tak neih theih chu a tum ber a ni. World Bank atang sum hmuh torah hian a kawng laihna tur mai bakah a thawktute thumchakna tur sum te pawh a keng tel a, MSRP-I (Aizawl to Lunglei kawng laihna) hnuai PWD kawng tam taka a lo tihchak tawh chu chhonzawm a tum a ni. Tin he kawng laih torah hian PWD Mizoram chu hna thawktu tur leh a vil zui tur an ni ang.

He project hnuai hian Public Works Department, Govt. of Mizoram chuan kawngpui hrang hrang KM 450 laia thui chu a tahtawlin a siam dawn a ni. Heng kawngpuite hian Lunglei, Champhai, Mamit leh Lawngtlai District te a tlawh dawn a ni. Tin, kawng laih turte hi 2-lane National Highway Standard (A rualin motor lian pahnih an tlan par par theihna tur) anga siam tum a ni a, a kawng chhuat zau zawng hi 12m niin a Blacktop chin hi 7m tura duan a ni. Kawngpui zauh nan hian kawng chhak lam nek a ni tlangpui dawn a, hmun thenkahtah chuan a kawng a that zawk nan leh pipuite him zawk nan kawng awmsa atangin aping bawk ang.

Kawng laih tur hrang hrangte chu a hnuai ami ang hi an ni:

Table 1 –MSRP II hnuai inkalpawhna kawng laih turte chu			
Group/Project 1		District(s)	Kawng thui zawng
i.	Lunglei - Tlabung - Kawrpuichhuah	Lunglei	87.9 km, (E-W road to Bangladesh border)
ii.	Champhai – Zokhawthar	Champhai	27.5 km, (E-W road to Myanmar border)
iii.	Chhumkhum-Chawngte	Lunglei	41.7 km, (part of original N-S road alignment)
Group/Project 2			
i.	Junction NH44A (Origination) – Chungtlang – Darlung – Buarpui	Mamit&Lunglei	83 km
ii.	Buarpui – Thenlum – Zawlpui	Lunglei	95 km
iii.	Chawngte including bridge to Bungtlang South up to Multimodal Road junction	Lawngtlai	76 km
iv.	Zawlpui – Phairuankai	Lunglei	30 km

2.0 Mizoram mipuite dinhmun tlangpui:

Mizoram hnam hrang hrang Lusei, Ralte, Paite, Bete, Powi, Lakher, Hmar, Riang, Tlanglau, Pangs, Bawm, Bru, Chakma leh a dangte chenna hmun a ni a. A tlangpuiin Mongolian thlah kalzelte an ni. A mi cheng tam zawkte hi Schedule VI of the Constitution hnuaiiah “Scheduled Tribes” an ni a. Mizote hi hnam inunau tak, inpawh tak leh hmeichhia leh mipa chungchangah pawh inthliar hranna nei ve lo hnam an ni. Mipui zaa sawmruk vel hi loneimi an ni a, thingtlang khuate chu chhungkaw lian tak ang main an cheng ho a ni. Naupiang, inneih leh chhiatni thatni dangah te an inlawmpuiin an intuarpu liam liam thin a, chhungkaw hotu ber chu pa ber a ni a (Hnam thenkhatah chuan nu ber an thu ber thin), pa ber chuan chhungkaw khawsak dan, ei bar zawna leh sakhua thlengin thu a nei thin a ni. Hetih lai hian hmeichhiate dinhmun pawh a tha hle a, an duh ang thawkin an eibar zawna thlengin en hran an ni ngai lo.

Mi tam berte hi Christian an ni a, Buddhist, Hindu leh Muslim te pawh an awm ve bawk..

Census 2011 Census-a a lan danin Mizoramah mihring 10,97,206 an awm a, chung zinga 50.61% chu mipa an ni a, 49.39% chu hmeichhia an ni. The sex ratio chu mipa 1000 zelah hmeichhia 976 awm ang an ni. 2001-2011 chhung khan mihring punna hi 23.48% a ni a, naupang kum 0-6 inkar 15.36% an awm bawk a ni. The Scheduled Caste hi 0.11% an awm bawk a, mipui 94.43% te hi Tribal an ni bawk. Kilometer khat bialah mihring 52 zel cheng ang an ni a, India ram pumpuiah chuan 382 cheng ang an ni thung (Census 2011).

Ziak leh chhiar thiam tam lamah (91.33%) Mizoram hi ram pumah a tha ber pakhat a ni a. 2011 chhiarpuiah khan mipa 47.22% ten ziak leh chhiar an thiam lain hmeichhia 44.11% ten ziak leh chhiar an thiam bawk a, a danglamna hi 3.11% chauh a ni. Mipui 44.36% hawktu zingah hian 85.27% te chuan mahni hna thawkin 14.73% te chu mi hnuai hna hna thawk thin an ni. Tin, an zinga 55.18% te chu loneiha eizawng an ni. mipui 55.64% ten hna an thawk ngai lo a, hei hian chawmhlawm tam zia a tarlang chiang viau bawk. Khawpuiah mipui 50% aia tam an cheng a, khawpuia cheng mipui tam berte hi Aizawl khawpuia cheng an ni. **See Table 2).**

Indicators	Mizoram	Lunglei	Champhai	Mamit	Lawngtlai
<i>Zau zawng (sq. km.)</i>	21081	4536	3185	3025	2557
<i>In zat</i>	222853	33058	25520	17731	22984
<i>Mihring awm zat</i>	1097206	161428	12745	86364	117894
<i>Mipae %</i>	50.61	51.35	50.41	51.91	51.40
<i>Hmeichhia %</i>	49.39	48.65	49.59	48.09	48.60
<i>Sex Ratio</i>	976	947	984	927	945
<i>KM khat biala mihring zat</i>	52	36	39	29	46
<i>Kum 10 chhunga mipui punna</i>	23.48	17.64	16.65	37.56	34.59
<i>Ziak leh chhiar thiam %</i>					
<i>Mipui zawng zawng</i>	91.33	88.86	95.91	84.93	65.88
<i>Mipa</i>	47.22	47.33	48.94	46.53	38.20
<i>Hmeichhia</i>	44.11	41.53	46.97	38.40	27.69
<i>Naupang kum 0-6</i>	15.36	15.56	16.42	17.94	19.07
<i>SC %</i>	0.11	0.11	0.01	0.06	0.12
<i>ST %</i>	94.43	95.11	98.19	95.04	95.30
<i>Hnathawk zat (% of total population)</i>	44.36	48.50	47.99	45.55	38.65

<i>Mipa (% of total workers)</i>	59.74	59.05	56.56	61.05	62.58
<i>Hmeichhia (% of total workers)</i>	40.26	40.95	43.44	38.95	37.42
<i>Mahni hnathawk</i>	85.27	79.21	88.02	91.98	83.58
<i>Tlangram lo nei</i>	48.80	56.06	67.53	74.44	66.71
<i>Leilet leh huan nghet nei</i>	6.38	10.68	6.96	5.42	3.84
<i>Chhungkaw zat</i>	1.32	0.92	1.23	0.55	1.08
<i>A dangte</i>	43.51	32.34	24.27	19.58	28.37
<i>Mi lo/hnuai inhlawh</i>	14.73	20.79	11.98	8.02	16.42
<i>Hnathawk ngai lo</i>	55.64	51.50	52.01	54.45	61.35

In Mizoramah chuan ram hi mipuite ta a ni a, Village Council ten an thuneihna chhungah chuan ram theh leh sem chungchangah thuneihna an nei a ni. Mahse kum engemaw zat liam ta atang khan he kalphung hi a danglam ve hret hret a, Sorkarin Permanent Settlement Certificate (Land Settlement Certificate leh pass dangte) pein ram neitu nihna te mipuite hnenah a hlan a, khaw tam zawkah chuam LSC te an nei tawh a ni. Hemi chungchang hi a hnuai ami ang hian i sawifiah teh ang:

- Village Councilte hian an thuneihna huam chhungah lo atan ram the theihna leh inhmun atana ram sem theihna (Khaw chhungah) an nei a, an enkawldan azirin P/Patta Revenue Department-ah dil thei a. P/Patta kum thum an neih hnuah an ram chu LSC-a let turin an dill eh thei. Mahse LSC-ah hian chhiah chawi tur a tam avangin mipuite hian LSC hi inhmun atan an dil tlangpui..
- Periodic Patta hi Revenue Departmen-in a pe chhuak thin a, dan naranin kum 3-5 a dam thin. Periodic patta te hi ram hman hawh phalna a ni a, a neitu hian a hman hun a ralah a renew leh thin tur a ni. A neitute hian kum tinin chhiah Rs. 50 an chawi ve thin.
- Land settlement Certificate Revenue Department-in a pekchhuah neitute chu a ngheta ram neitute an ni a, an inhlanchhawng thei a, an hralhin midang hnenah an hlan chhawng thei bawk.

Mizote hi tlangram lo neia eizawng thin an ni a. Ramngaw an vat a, an hal a, thlai an ching a, a kum lehah ram dang an zuan leh thin. An hunpui leh kutni vangthla te pawh lo neihdan nen inrem takin an her rem thin a ni. Economic Survey-in a tarlan danin lo atan neih zawng zawng 32% hi tlangram lo an ni a, Mizoramin an buh mamawh 20% chauh an thar chhuak a ni. Tlangram lo neih bansan turin sorkarin hma a la mek a, New Land Use Policy a kalpui mek a ni¹.

Sorkar laipuiin 2011-12 a a tihchhuahdan chuan thingtlangah thla khata Rs. 1066 leh khawpuia Rs. 1155 la lut pha lo chin hi BPL an ni ang a ti a. Mizoram mipui 20.4% te hi BPL niin BPL hi rampum ngaihtuah chuan a hniam hle a ni (37.2%).

Ziak leh chhiar thiam an tam ngaihtuahin Mizoram hi a la hnufual hle a. Hei hi a hmunhma rem loh vang te, inkalpawhna kawngpui leh hmanraw dang that loh vang te a ni ber awm e. Tin, tlangram chhengchhe tak a nih avangin India ram hmun dangte nen inkalpawh zung zung a harsa a, chu chuan kawng tam takin hmasawna a dal a ni. Tin, an lo neihdan kalphung a dik loh avangin hmasawn a harsa a, mipui tam takte tlangram lo neiha ei an la zawn avangin hmasawn a harsa a ni. An khawtlang nunah Tribal mite nundanin nghawng a la nei nasa a, an thil tharchhuah pawh Agro-based a la ni a, a man a tlawm mai bakah tualchung mamawh puhrukna tur bak an thar chhuak meuh lo.

Tate thang chak ber pakhat a la nit ho a, mimalin kum khata a sum lakluh hi chawh rualin Rs. 54,689/- a ni a, India ram pumpuia chuan Rs 61,564/ a ni thung. (2011-2012). Mihring khawsakdan chhiat leh that tehna (Human Development Index) ah chuan Mizoramin 2004-05 khan

¹A policy to help farmers move away from the traditional slash-and-burn method of cultivation.

0.584 a hmu phak a, Hmarchhak State te zingah a sang ber niin pakhatna a ni. Gross State Domestic Product (GSDP) thandanah pawh Mizora chu India hmarchhak state te zingah a tithe ber niin 11% lain 2007-2012 chhung khan a thang a ni. 10th 5 yr Plan chhung khan GSDP kha 5.7% in a thang thung ae Sector hi state chhunga sector lian ber niin GSDP-ah 60% lai a luah a ni. Industry atangin state sum dehchhuah 20 - 22% hmuh a ni a, agriculture, mipui 60-70% lain inngahna bera an hman atangin state sum leh pai lakluh 18 - 20% chauh hmuh a ni. Mizoram economy hi 2012-2013 chhung khan State sum leh pai thawhchhuah chu 10.37% in a pung a, hei hi National average 5% ai chuan a sang fe zawk a ni.

Mizoram hian Industry hmasawna turin harsatna tam tak a nei a, kawng tha neih loh hi hemi kawnga harsatna lian ber pakhat a ni awm e. Thil dang; leilung hausakna chungchangte, inkalpawhna leh inbiakpawhna thil hrang hrang te, thil siam chhuak tura sum mamawh tawk neih theih loh chungchang te leh tunlai thiamna thil hrang hrang ten a la luh chhuak tawk loh avangte pawhin Industry than hi a thu hle a ni.

Mizoram hian kawngpui (primary and secondary roads) 6,840 kms laia thui a awm a, chung zinga 4,430 kms (64.77%) chu State PWD-in enkawlin a dang 1,790 kms (26.17%) chu Border Roads Organisation in an enkawl bawk a. A dang 620 kms (9.06%) te chu link roads Rural Development, Agriculture, Horticulture, Soil Conservation leh Forest Department ten an laih a ni. Kum sawm chhung khan kawng awm zat hi 7.81% -in a pung a, tun dinmunah hian ram KM 100 bialah kawngpui km 33.44 awm ang ani a. Chu chu ram puma awm zat Km 48.8 aiin a la hniam hle a ni.

Thingtlang lama sum leh pai dehchhuahna hnarte hi an la mawlmang hle a, lo neih, vawk vulh, ar leh ran dang vulh bakah thing leh mau tualto hralh chhuah tih velte a la ni ber. Sawi tawh angin heng hmasawna daltu lian tak pakhat chu kawng neih that tawk loh hi a ni a. Chuvangin kawng sial tum mek hi sial/siam a nih hnu chuan mipuite ei leh bar dinmun nasa takin a chawikang ngei ang.

3.0 Social issues in Group I project roads

Group-I hnuaia kawng laih turte hi a hmangtu mipuiten an hmuhdan zirchianna neih a ni tawh a. Heng kawngte hi an len zawng, sei zawng leh hman tangkai a nihdan chenin a inang lo a ni. Kawng tin mai hian tunlai kawngpui tha an siamdante ngaihtuah chuan standard mumal a nei lo tih hmuh a ni. Hmun tam takah chuan kawngte hi duh aiin a kawiiin a chhukchho em em hlawm a, a kawngchhuat a chhe hlawm hle bawk a, a zimin tuilunkawr mumal pawh a awm meuh lo tih hmuh a ni bawk. Leimin hlauhawm hmun tam takah hmuh a ni a, kawngkawi hlauhawm tak tak leh motor hmanga vahvel nana duhthusam lo tak tak leh chetsualna thlen thei khawpa kawng khuar chhia hmun tam takah hmuh a ni bawk. Tha taka enkawl an nih hlawm loh avangin tuilunkawrte hian duhthu an sam lo em em a, kawng kam te pawh a hniam hlawm em em a ni. Mipuite hian zin veivahnan SUMO (Maxi Cab) an hman nasa der a, Bus lian chi ang ho chu an kal tlem hle thung. Group –I hnuaia kawng laihturte hi Chiang zawkin i han en teh ang:

Lunglei-Tlabung-Kawrpui Road (87.830 Km): He kawng hian khaw pangai pariat; Lunglei, Hauruang, , Phairuankai, Chhumkhum, Lungsen, Tuichawng, Tlabung leh Kawrpui bakah khawper pahni Pachang leh Sihphir khuate a paltlang a. Kawng awmsa hi a tlangpuiin 5.2m vela zau a ni hlawm a, a laih phung mai bakah tuna kawng dinmun hian duhthu a sam lo em em a ni. Hei vang hian bungraw rit phur motor liante an kal tam lem lo hle a ni. He kawng hi Lunglei khawpui leh Bangladesh nena kan inrina lama chengte tan inkalpawhna kawng pawimawh ber a nih avangin laih that a nih hnu chuan mipuite nunphung leh sum lehpai dinmun thlenga chawikawngtu a ni ngei ang.

Chhumkhum-Chawngte Road (41.646 Km): He kawng hian khaw paruk, Chhumkhum, Rangte, lalnui, Lungrang, Rualalung leh Chawngte khuate a paltlang a, Chawngte khua hi

Chakma Autonomous District Council (CADC) khawpui a ni. The CADC hi 1972 ah Sixth Schedule to the Constitution of India hnuai a ni a, Chakma hnam Mizoram chhim thlang lama chengte mahnia ro an inrel ve nana din a ni. Km 1500 bial vel a huam a, mihring pawh nuai khat dawn an cheng a ni. CADC hian Department thenkhat an enkawl tur bika ruatahte thuneihna lekkawhin hna anmahniin an thawk thin a ni. Kawng awmsa hi KM 48 a thui a ni a, a kawng hi a chhuk chovin a khuar chhe hle a, dan naranin 5m vela zau a ni tlangpui. He kawngin a kaltlang ram te hi tlangram chhengchhe tak te, hmun thenkhatah erawh chuan Chamdur phairuam hmun rem deuhte an ni. He kawngah hian fur lai chuan hmun tam takah lei a min thin a ni.

Champhai-Zokhawthar Road (24.630 Km): Hekawng hian khaw paruk, Champhai, Zotlang, Ruantlang, Mualkawi, Melbuk leh okhawtharte a tlawh a. Champhai lamah hian leilet hmun rem leh khawchhung a paltlang phawt a, a kal zel a, hmun rem lo leh leimin thlen duhna hmun thenkhat te pawh a paltlang a ni. He kawng hian Champhai leh India leh Myanmar ramri inkara veivahna awlsam leh tha zawk mipuite a pe dawn a, Mizoram leh Myanmar insumdawn tawna kawnga kawngpui pawimawh ber pakhat a ni dawn a ni. He kawng laih thar tur hi kawng awmsa aiin KM 2.5 laiin a tawi zawk dawn a, a hmangtu mipuite hian kawng tha an neih hnu chuan motor chuan man tlem zawk leh hun tlem zawk hmangin an inkalpawh thei tawh dawn a ni.

Uluk taka Environment and Social (E&S) Consultants ten survey an neih atanga a landan leh DPR Consultants in a zirchianna atangin kawng laihturte hian nghawng lain tham tak an nei dawn a. PWD-in kawng awmsa bak ram an neih loh avangin mipuite hnen atangin an ram laksak a ngai dawn a, heng ram lakte hi kawng laih zauh nan te, chhuk chho lutuk leh kawu ulh lutuk siam rem nan te, kawng pengthuam siam that nan te, mipuite him zawk nana khawchhung helna tur te lei dawhna tur leh kawng laih vanga leivung leh hnawm dang paih nan hman tur a ni. Kawng laih that nana ram mamawh belh tur zat hi 268 hectare vel ni tur achhut a ni a, 143 hectare hi Lungle- - Tlabung – Kawrpuichhuah atan, Chhumkhum – Chawngte kawng atan 71 Hectare leh Champhai – Zokhawthar tan 54 hectare ngai tura chhut a ni. In dinglai 740 zet tihchhiat ngai tura chhut a ni a, mipui vangtlang thil 60-70 lai chhe tura chhut a ni bawk. Nghawng a neihdan tur chugchang survey atanga thil hriatchhuah pawimawh zualte chu:

MSRP-II, Gr-I hnuai a kawnglaihin nghawng a neihdan tur chungchanga mipuite biakrawna

<i>Thil sawihote</i>	<i>Mipuite duhdan/ngaihdan</i>
<i>An hmuhdan</i>	<ul style="list-style-type: none"> • Kawng awmsate hi an chhe hle a, fur laiin an diak kawu em em a, thal laiin a khu thin em em thung. • Kawng laih a ni dawn tih hi tlangkam atangin an lo hre tawh.
<i>Eizawna</i>	<ul style="list-style-type: none"> • Lo neih hi an eizawna pui ber a ni a, thlai chi hrang hrang; bawkbawn, beans, sawhthing, balhla, hmarcha, antam leh thlai dang tam tak an thar thin a, anmahni khua leh khaw thenawmahte an hralh thin. • Kawng kamah dawr siamin thenkhat chuan ei an zawng a, mi hnuai a inhlawhfa an awm nual bawk.
<i>Hlawkna an beiseite</i>	<ul style="list-style-type: none"> • An thlai thar chhuahte tha taka an hralh theih nan kawngpui tha tak an duh hle. • An khuain a changkan pah sawt ang. • Sumdawn a awlsam saw tang a, boarder trade pawh. • Khawpui kal a awlsam sawt dawn bawk a ni. • An ram hlutna a sang sawt ang

<i>A thatlohna tura an ngaihte</i>	<ul style="list-style-type: none"> • An khaw tlawh lova kawng siam a nih hian an thlai thar leh thildang hralhna a harsa saw tang a, an sum lakuh a tlahniam saw tang..
<i>Suggestions</i>	<ul style="list-style-type: none"> • Kawngpui laih tur hi an lawm hle a, an khua paltlang ngei se an duh vek bawk. • An khua a hel dawn ai chuan khawchhung paltlanga kawng kal sa hi tihlen nise an duh a ni.
<i>Ngaihpawimawh ngai bik thenkhat te.</i>	<ul style="list-style-type: none"> • Art and Culture Department, Govt of Mizoram-in an humhalh lai hmanlai lungphun pawimawh pakhat chu sutchhiat a ngai dawn a ni. • Thlanmual tiche lo hram se an duh em em a ni. • Melbuk khua chuan Mangkhaia Hall tihchhiat an hlau hle • Kawng laih tlang a nih hnu chuan lirthei an tlan chak tawh dawn avangin naupang tan a him lo sawt dawin an hria a ni.
<i>Thil pawimawh dang hriatchhuahte</i>	<ul style="list-style-type: none"> • Naupang kum ling lo chhawr luih te, mihring inhralhruk te, inrawk leh rukrukta a hluar lem lo..
<i>Khawtlang khawih thil hna thawh mek/NGO te hmalakna kalmekte</i>	<ul style="list-style-type: none"> • HIV/AIDS Awareness programmes chu MSACS hnuaia HIV/AIDS counsellors, Champhai leh Lunglei-a awm ten an kalpui mek a ni. MHIP te pawn Mizoram State AIDS Control Society (MSACS) nen tangtlangin an kalpui mek bawk. . • Champhai, Lunglei leh Tlabung Doctor ten Free clinic an nei thin. • Young Mizo Association (YMA), MizoUpa Pawl (MUP), KTP (KristianThalai Pawl) Thalai Kristian Pawl te chu pawl langsar zualte an ni. • Self Help Groups (SHG) te pawh an awm bawk.
<i>An thil duh dang</i>	<ul style="list-style-type: none"> • Mipuite hian hna thawh hunah a theih ang anga tel ve an duh a ni.

Kawnglaih hlawkna turte: Kawng laih vang hian khawpui pan a awlsam sawt dawn a, damdawi in leh zirna chungchangah te, bazaar chungchangah te pawh nasa takin mipuite a chhawk dawn a ni. Rang zawk leh nuam zawkin an zin thei ang a, hmasawinna pawh chakzawkin a kalpui theih ngei ang..

Nghawng tha lo a neih turte: A hnuaia tarlante hi survey neih laia mipuiten kawnglaih nghawng tha lo tura an sawite a ni:

- An inhmun te, an lo leh sumdawinna hmun te an chan ang.
- An thlai tam tak an chan bawk ang;
- In leh lo, sumdawinna hmun leh ran vulhna hmunte pawh an chan bawk ang.
- Eizawinna chan chhungkaw thenkhat an awm ang.
- An in mai bakah an lungrem, huanpal, dill eh tuilakna te pawhin a tuar ngei ang.
- Vangtlang thil; i) Ram (vangtlangin lova an neih mek leh an dah tui lai) te, ii) In leh thil dang; (Biak In, thlanmual, mipui inthiarna hmun, tualchhung kawng, step, chawlhbuk leh bazaar te a chhe dawn a ni.);
- Lirthei chetsualna a tam sawt ang.
- Kawng laih laiin chhiatna tam tak thleng thei a awm bawk ang.
- Hna thawh laiin hmun dang atanga lo lut hnathawktu tam tak an awm dawn avangin HIV/AIDS a hluar sawt an hlau hle bawk..

4.0 Dan leh hrai chungchang

He SMF siam nana dan leh hrai leh thil dang a kaihnawihthe chua a hnuaia Table-3 ah hian tarlan a ni. Project thuneitu ten heng dan te hi tha takin hnathawktuten an zawm ngei tih an enfiahin an vil tur a ni.

Table 3 – Dan leh hrai chungchang

Sl. No	Dan hming	Engtia hman tur nge
1	LA Act, 1894 (amended in 1984)	Ram lak turte chu he dan hmang hian lak tur an ni.
2	National Rehabilitation & Resettlement Policy (NRRP), 2007.	He Policy kalphung hian Project vanga tuartute tanpuina pek tur an ni a, Rs 20000.00 aia tlem lovin a phute chu tanpui tur an ni.
3	The Mizoram (Land Revenue) Act, 2013.	He dan hian Mizoram chhunga ram chungchanga zawm turte a sawi a ni.
4	Mizoram (Prevention of Government Land Encroachment) Act, 2001	He dan hian Mizoram chhunga phalna mumal nei lova ram/in leh lo/thlai neite chu an ram luah mek atangin hnawhchhuah tur a ni tiin a sawi a. Hetiang mite hian he project hnuaiah hian tanpuina awm thei ang an dawng ve thei ang.
5	New Land Use Policy, Mizoram.	Mizoram sorkarin a kalpui mek mipuite dinchhuahnana a duan a ni a, Mizoram pumah mipuite an lo intodelh theih nan kalpui mek a ni.
6	The Scheduled Tribes and Other Traditional Forest Dwellers (Recognition of Forest Rights) Act, 2006	He dan hian ramhnuaia cheng thin Tribal hote humhalhdan chungchang a sawi a. Phalna nei lo mah se ram hnuaiah chhuan thum chung (Kum 75) an khawsak tawh chuan an ram enkawl thin (Tin 10 hmun) chu an ta anga ngaih tur a ni a, hralh/ midang hnena hlan erawh a thiang lo a ni.
7	World Bank OP 4.12 – Involuntary Resettlement, World bank	<p>He dan hian World bank hnuaia hnathawh a nihin a tuartu mipuite tuamhlawmdan tur kaihhruaina chungchang a sawi a. Mipuiten an duh vang reng nilova an ram an chan dawn chuan heng a hnuaia tarlanahte hian tanpuina dan angin pek tur a ni.</p> <p>(i) In thiat leh sawn a ngaihin;</p> <p>(ii) An rothil leh chung panna kawngte a chhiatin; or</p> <p>(iii) An eizawna eh sum lakluhna hnar te a chhiatin;</p> <p>He dan hnuaiah hian duhvang reng ni lova World bank Project hnuaia hna thawh a nih chuan tanpuina pek ngei tur a nih thu tarlan a ni a, a tuartu mipuiten an dinhmun hmasa aia chhe zawka an din loh nan kaihhruaina siam a ni. A tuartu zawng zawng chu pass dik an nei emaw nei lo emaw an phu tawk tanpuina pek theuh tur a ni.</p>
8	OP 4.10 – Indigenous Peoples, World Bank	He dan hian World Bank sum hmanga hnathawhna hmunah hna pangi bakah retheihna engemaw kawng tala um bo nana duan a ni

Table 3 – Dan leh hrai chungchang

Sl. No	Dan hming	Engtia hman tur nge
		<p>a. Hmasawna hna thawh reng rengin mi hring dikna chanvo humhalh tlat a, hnathawhna hmuna cheng mipuite eizawna, hnamdan leh nunphung te nekchep hauh lo turin kalpui tur a ni. World bank hian hna a thawh nana sum a thawh dawnin mipuite nen inbiak rawna mumal tak, zalen taka neih a nih hmasak a, mipui tam zawkten rem an tih tlan phawt a ngai thin a, Bank-in hna a thawh dawn chuan hengte hi ngaihpaawimawh a ni ngei ngei tur a ni: (a) Indegenous people (pipute atanga a ram luahtu dik takte) dinhmun a tichhe sawt tur a ni lo a, a tichhe dawn a nih chuan a pumpelddan zawn tur a ni. (b) Mipuite tawrhna hi pumpelh theih a nih ngang loh pawhin a tihnep theih dan tal zawn ngei ngei tur a ni. Tin, World Bank hnuai hnathawhah reng reng a ram neituten a hlakna an tel ngei tur a ni a, mirethei zawkte nekchep zawngin hna thawh loh tur a ni. Hnam nun tichhe zawng te, hmeichhia leh mipa inkara inthliarna ti zau zawng te, kum lama upa zawkte thlauhthlak an nih loh nan ruahmnanna siam ngei tur a ni bawk. Mizoram mipui 94.5% lai hi Tribal an nih avangin chhawmdawl na leh an dinhmun siam thatna tura hmalakna turah pawh Tribal mipuite chu ngaihpaawimawh ber tur an ni dawn a ni. Heivang hian chhawmdawl na kalpuidan tur lehkhabu Resettlement & Indegenous People Development Plan (RIPDP) chu buatsaih a, mizo twang lehlin vek hnuah mipuite chhiar theih tur tlangzarh tur a ni. A paltlang tur mipui tamzaw ten he kawng laih tur hi an pawm ngei a ni tih tichiang turin Consultation (Mipuite biakrawna) neih ngei ngei tur a ni.</p>
9	The Right to Information Act, 2005	<p>He dan hian mipuiten thuneitu sorkar hna thawhah hriat chian duh an neih chuan an hriat chian theihna tur kawng a hawng a. He pProject hnuai hnathawhte pawh hi mipuiten an duh chuan RTI hmang hian an zawtin an hrchiang thei ang. He dan hnuai hian mipuiten zawhna an neih te hi hunbi mumal tak chhungin chhan tur a ni a, langtlang tak leh belhchiandawl taka hna thawh a nih a, tidiklotu hriat chhuah zung xung a nih theih nan thuneitu leh mawhphurtu mumal tak awmin he dan hi he project hnuai hian pawh hian kalpui tur a ni. Central Information Commission leh State Information Commissions ten dan an duante pawh tha taka zawm bawk tur a ni.</p>
10	Environmental protection Act, 1986 and subsequent amendments	<p>He dan hian hmasawna tura hnathawhna torah mipui ram lak a nih dawn chuan Cnvironmental Clearance dil/lak a nih hmian mipuite rawn hmasak ngei tur a ni a. Mipuite Biakrawna hi kawng hnihin a then theih a: (a) Mipuite nict chhungah ngei neih tur a ni. (b) A khawih tur mipuite hnen atangin ziak ngeiin an remtihna lak ngei bawk tur a ni a, he phalnaah hian an environment a khawih chhiat tur pawh an remti ngei a ni tih an tarlang tur a ni.</p>
11	World Bank Policy on Access to Information and	<p>World Bank in he dan an duan danah chuan Mipuite chhawmdawldan tur ruahmanna siam a nih lai hian mipuite rawn ngei ngei tur an ni a, tin hnathawh hunah pawh mipuite duhdan leh</p>

Table 3 – Dan leh hrai chungchang		
Sl. No	Dan hming	Engtia hman tur nge
	Disclosure	diknate zah sak tur a ni a. Tin, heng mipuite chhawmdawl nana hnathawhdan tur inziaka bute hi mipuite chhiar theih turin an khuaah ngei, anmahni tawng ngeiin tlangzarh ngei tur a ni. EP Act 1986 leh NRRP 2007 te pawhin EIAlehd EMP te buatsaih laiin mipuite ngaihdan lakna hun, Public Hearing neih ngei tur tiin an sawi bawk.
12	The Right to Fair Compensation and Transparency in Land Acquisition, Rehabilitation and Resettlement Act, 2013	He dan hian mipuite hnen atanga ram lak a nih dawnin langtlang leh dik taka kalpui tur a ni a ti a. Compensation rate a tihsan mai bakah chhawmdawl na pekdan turte a sawi bawk a. He dan hi Mizoram sawrkarin hman theih tura a pawm veleh hman nghal tur a ni dawn a. Tunah pawh hian Chhawmdawl na hnathawhdan tur lamah chuan engemawzat chu hmalam hun thlir chungin hman a ni der tawh a ni..

5.0 Social Management Framework

Social management framework hi Mizoram sorkarin hnathawh turin mipui a nghawng dan tur zirchianna leh harsatna thlen turte sut kiandan tur Management Plan siamdan tur kaihhruainana a buatsaih a ni a. SMF-ah hian a nghawng tur mipuiten zangnadawmna leh tanpuina dang an dawn dan turte Chiang taka tarlan a ni a, chungte chu a mal malin lo en dawn ila.

5.1 Buatsaih a nih chhan

Mizoram State Roads Project, 2002-ah khan, mipuite zangnadawmdan tur leh chhawmdawldan turte that akin duan a ni tawh a. Mahse hun lokal zelah dan leh hrai leh inkaihhruaina thar a lo awm belh zel ava chungin ennawn a lo ngai ta a. Tichuan tuna kan SMF thara chuan a hmaa kan neihsa te siam thain dan tharin a phut thilte telh an ni a. Mipui biakrawn an nih laia an mamawh an sawite leh an dinhmun zirchian anih laia an mamawh nia hriatte pawh telh belh a ni bawk. Tuna hna kan thawh tur Mizoram State Roads-II Project atana SMF siam a nih chhan ber chu:

- R&R policy awmsa thumthat a, dan leh kaihhruaina dang thuneituten an siam tharte telh belh a ni a, heng dan thar kan tih hian Mizoram leh India sorkar dan siam mai bakah sum kan hmuhna hnar World Bank te, ADB te leh a dangten kaihhruaina an siamte pawh telh belh a ni.
- Hun hmasa lama kan tawnhriat tha tak takte pawh atak hman an nih nan telh an ni.
- Hna thawktu tur Project Implementation Unit tih chak leh thum that te.
- Mipui lungawilohna thawidamdan tur chungchang te, hna kalpuidan awmsa te, hhawmdawl na sum tur zat chungchangte eh hna vil leh endik dan tur pawh kan hun tawn mek milin siam that a ni.

SMF ah hian a hnuai mite hi an awm a.

- Resettlement and Indigenous Peoples Policy Framework (Ram neitute chhawmdawldan tur chung chang);
- HIV/AIDS vendan tur leh mipuite hrilhhriat chungchang.
- Mipuite ei le bar dinhmun chawikan chungchang.

5.2 SMF Buatsaih a nih dan.

SMF buatsaih a nih dawn hian PWD Mizoram chuan Project in a nghawng tur mipuite hnenah kalin khawtlang nun phung te, eileh bar dinhmun te zirchiangin a hmunah kalin anmahni ngei pawh an berawn a. State levelah pawh tlangzarh a nih hmian zirchianna leh mipuite rawnna hun hman a ni bawh a, he hunah hian mipuite hnen atangin thurawn leh rawtna hrang hrangte ngaihthlak niin chungte pawh chu that akin telh an ni. He rorel inkhawm minute hi **Appendix I** ah tarlan a ni..

Tin, mipuite nena inbiak rawnna hun hman apiangin thla that akin lak a ni a, thlalk pangai bakah Vedio-in lak vek a ni. Mipuite biakra Photography and videography documentation² is being carried out for all the consultations held during survey and preparation stage. Types of consultations at different stages of preparawnna hun hmandan tlangpui chu:

- Aug-Sept : Khaw tinah mipui biakrawn an ni.
- Sept.-Oct. PIU staff te, DPR leh E&S Consultant ten a hmunah kalin a nghawng tur mipuite biakrawnna an nei.
- Oct.-Nov. : Special committee meetings chu SLAO kaihhruainain khaw tinah neih a ni.,
- November 18: Stakeholder Consultation Workshop chu draft SMF and EMF te sawiho turin neih a ni bawh.



Stakeholder Consultation on the Draft Social Management Framework

He inbiakrawnna hunah hian a hnuaia mite hi an tel:

- a) Departments hrang hrang; Revenue, Agriculture, district administration, Mizoram state Aids Control Society (MSACS), Forest department, Pollution Control Board, Environment Department, Irrigation department, Finance department, Urban Development and Poverty Alleviation (UD&PA), etc aiawhte..
- b) NGOs – Young Mizo Association, MizoHmeichheInsuihkhawn Pawl (MHIP), Truck Operators Association, leaders of Sub-Hqrs YMA,

² Video and photo documentation is maintained in project records

c) A nghawng tur mipui thenkhatte, VC te leh chanchinbumite

5.3 Principles of the SMF

Pipute atanga hnathawhna tur hmuna lo cheng tawhte chhawmdawldan tur ziakna lehkhabu RIPDP-buatsaih leh ataka hman a nih hunah hengte hi hre reng chungin buatsaih leh kalpui tur a ni..:

- Tihluhnaa hmuna hrana inbenbeltir hi a theih chung chu tih loh tur a ni a, mipuite tana harsatna thlenzawng; an in leh lo sut chhiatsak te, hnam ro thil te humhalhsak tur an ni.
- Mipuite chu an chenna atanga chhuahtir an nih pawhin a hmaa an dinhmun aia an chhiat loh nan chhawmdawl na pek ngei tur an ni.
- Project in a nghawng mipuite dinhmun hi a hma aia tha zawka siam tura hma lak a nih nan..
- An hriat tur awm angte mipuite hriattir a, anmahni biakrawn a, hna kalpui hrnag hrnagte pawh an duhdan leh ngaihnan angin a theih chen chenah kalpui a nih theih nan.;
- Mipuite duhdan leh ngaihnan te hna tan hmaa inbiakrawnna hmanga lak lawk vek a nih theih nan..
- Dinhmun hniam zawka dingte hlamchhia an nih loh nan leh hna thawh hunah pawh phur taka an tel ve theih nan
- Zangnadawmna leh tanpuina te hna tan a nih hma ngeia pek an nih theih nan.
- Vangtlang thil te tihchhiat turte a ngai ang thlapa rulh let emaw, a hu tawk ngei sum hmanga a neitute tanpui an nih theih nan.
- Ram neituten An thlaite an seng theih nan hriattirna mumal tak chhuah hnuah chauh ram laksak an nih theih nan;
- Naupang kumtlinglo hnathawh luih tir hi dan phal loh thil a ni a, dan phal loh thil tih a awm loh nan.;
- Hmeichhia leh mipate intluktlang taka he project hnuaiah hian enkawl an nih nan.
- State dang atanga hnathawktu local zingah naupang leh hmeichhiate an tel ve chuan uluk taka enkawl na a bika pek an nih theih nan. (e.g. Naupang awmna te, hriselna leh thianghlimna chungchangah te, riahbuk chungchangah te, etc.)

9.3 Sawifiahna

A hnuaia tarlan ho hi chiang taka ruahmanna a awm hran loh chuan hman a ni ang.

- **Agricultural labourer:** awmzia chu a ram khawihchhiatna hmuna kum 5 tal lo awm lawk tawh, a hmuna inhmuna nei chuang lo mahse hlawhfa ruaia lo neia eizawng thinte an ni.
- **Agriculture:** Horticulture telin, hun bi neia thlai te tihpun emaw huan tihpun te, thlai phun emaw vawn that te, ran vulh te, pangpar chin leh pakhawi thlengin a huam a ni.
- **Agricultural land:** Lo atana hman mek emaw, hman thin emaw hman leh tura dah tui mekte hi an ni.
- **Allotment:** Sawrkar thuneituten danin a phal anga mimal emaw, pawl emaw hnena ram an pek hi a ni.
- **Below poverty line (BPL) emaw BPL chungkua:** chungkua poverty line hnuaia hmuna hrang hranga awm Planning Commission of India in a duan te an ni a, Hun bithliah chungkua BPL a awm te an ni.
- **Building:** chu in, pawnah emaw a chung neia siam,brick,thing,lei,thir emaw hmanrua engpawh hman mahse puan in emaw in, awm nghet lo tura duan leh sawn theih ang chu telh a ni lo.

- **Certificate of Land Settlement or Land Settlement Certificate:** u/s 11 of the Mizo District (Land and Revenue) Act, 1956 emaw section 4(2) of the Mizo District (Agricultural Land) Act, 1963 hnuai phalna lehkhah, an ruahhman sa leh a tlukupi certificate he act hnuai phalna.
- **Corridor of impact (COI):** ram pum ena a zau zawnga an sakna turin embankments, kawng lam atana an hmanrua leh thil tul te, kawr, ducts and lines, fences, green belts, hmun himna leh hnathawhna hmun leh a dangte a ni a. ram mamawh tur dang chu lei emaw luah hawh a Right of way baka a kal chuan
- **Cut-off date: (i) ram laksak chungchangah a ram neitute** (LSC/PP/Village Passes), an laksak ni tur chu Section 4(1) LA ACT, 1894 sawrkarin a tihchhuah chanchinbua mipuite hriat atana an tihchhuah hnuhnun ber ni a ni.. Ram pass pangai neilo tan chuan, an tihtawp ni tur chu census and socio-economic survey neih tanna ni ah a ni ang
- **Entitled person (EP) :** mi he hna in a a nghawngtur, tanpuina dawng thei ngei turte an ni.
- **Holding:** Mipakhat ram neih zat sawina a ni.
- **Improvement:** Ram awmsa a hmaai tang zawk tur leh a thar chhuah tam zawk tura cheibawl tihna a ni.
- **Income:** Ram laksak an nih tur thu puan a nih hmaa PAP te sum lakluh dinhmun dik tak sawina a ni.
- **Kiosk:** Kiosk chu booth/stall/cabin/cubicle thing leh thir leh insakna hmanruaa siam sawn emaw hmundanga dah a mal anga din, khawih chhiat loh leh sumdawna lian vak lo atan a hman a ni..
- **Land :** Ram tihna a ni a, tin ram nena inzawm thildang; In, thlai leh adangte pawh a huam vek ang.
- **Land Acquisition.":** LA Act, 1894 hmanga mimal ram compensation pek hnuai laksak hi a a ni.
- **Land Holder:** chu ram a hlawma neitu emaw, ram neitu emaw, chhiah pek chungchanga mawhpurte te an ni.
- **Land Revenue:** Ram a neih vanga mimalin sorkara chhiah a pekluh thin hi a ni..
- **Land Settlement Certificate neitu:** chu ram a ngheta neitu nihna sawrkarin a pekte an ni. .LSc neitu chuan ram neitu nihna a nei a, a duh hunah midang hnenah a hralh emaw, a pe chhawng thei baw.
- **Lease Holder::** Mizoram (Land and Revenue) Act, 2013 in a sawidan chuan mimal emaw, pawl emaw ten Industry leh thil dang atan ram an mamawhin ram chu sorkar atangin an hawh tur a ni a ti a, Khawtlang thil kan sakna hmun angte hi mimal hmingin pass a siam theih loh a, pawl hmingin sawrkar hnen atangin hawh thin tur a ni.,
- **Marginal farmer:** Loneimi, tlangramah chuan Tin 2.5 hmun neite hi Marginal farmer an ni a, leilet ang chiah chuan Tin khat leh a chanve hmun aia zim neitute hi marginal farmer an ni.
- **Non-Agricultural labourers.:** Kawng lai hin a paltlang tur khuaa kum 5 tal lo awm tawh, loneia eizawng ni lo, kamding ni baw silote hi an ni.
- **Notification: :** chu hriattirna a sawrkarin a ram luah hrang hrang luahtu te hnenah L.A. Act, 1894 hnuai a tihchhuahte a ni.
- **Occupier :** Scheduled Tribes zinga mi ramhnuai ram 13th day of December, 2005 hmalam a mi hmalam ami te an neihna tur a ni;
- **Pass:** Competent Authority in a pass mimal emaw pawl hnenah ram hman phalna an pek hi a ni.
- **Pass Holder:** Sawrkarin mimal emaw, pawl emaw, ram hman phalna a pekte hi an ni. A pass a zirin hman phalna leh neitu nihdan hi a danglam thei a, Pass holder reng rengin an ram an enkawl dan leh inhlanchhawn danah sorkarin phalna a pek piah lamah engmah an ti thei lo a, a thuneihna chin hi pass-ah chiang takin ziahlan a ni thin.
- **Periodic Patta:** Periodic Pata hi sorkar hnen atanga lo leh huanthlai china tura tiam chin neia ram hawh phalna a ni. Periodic Patta ah chuan sorkarin mimal hnenah ram hman hawh theihna a pe a, kum bithliah chungin sawrkarah ram hman hawh man felt akin chhunluh a ngai a ni.

- **Periodic Patta Holder:** Hun bik neia sorkarin ram hman hawh a phalsak te hi Periodic Patta Holder an ni a. An ram hmanhawh chu dan phal chinah an cheibawl thei a, amaherawhchu neitu nihna an nei lova, sorkar phalna lo chuan anmahniin midang hnenah an hlan chhawng ngawt thei lo bawk..
- **Person :** Mimal emaw, sumdawng pawl emaw, pawldang engpawh a huam thei vek a ni..
- **Premium:** Miin ram a neih theih nana sorkar hnena pawisa chhunluh ngai a chhunluh hi a ni..
- **Project :** Mizoram State Roads II – Regional Connectivity Project hi a ni.
- **Project affected Area:** LA Act, 1894 hnuiaia sorkarin Official Gazette hmanga kawng laihna tura ram lak tur chin a sawi hi a ni.
- **Project affected Family:** He Project hnuiaia hna thawh a nih dawn vanga kawng engemaw tal an chhungkaw thil a tihchhiat/khawihdanglamsak chhunguate an ni; mahnia awm pawh ni se.
- **Project Affected Person (PAP):** Ram emaw, in emaw, thlai emaw Project-in a khawih chhiat tur neitu tihna a ni.
- **Project Affected Household (PAH):** Project in a nghawng tur chhungkua, in khata cheng hote sawina a ni.
- **Project Displaced Person (PDP):** Project kalpui a noih dawn avanga an in leh lo leh ramte chan a, an duh vang reng ni lova hmun danga insawn ngaite sawina a ni. PDP zawng zawngte hi PAP an ni vek a, PAP zawng zawng erawh PDP an ni vek lo tih hriat a tha awm e.;
- **Rent:** Sorkara chhiah kan pek luh ni lo, mimalin mi ram an hman hawh avanga an thar chhuah atanga engemaw zat an pek emaw, an hman man suma an pek thin hi a ni.
- **Replacement cost:**/Thil engpawh, Project avanga chan tur te hi a ngai ang chiah nei leh dawn ila sum kan sen ngai tur zat sawina a ni.
- **Settled Cultivation Land:** Huan nghet/lo nghet atana Revenue Pass emaw, VC Pass emaw pek tawhna ramte hi a ni.
- **Small farmers:** Lo/huan neitu, Tlang ramah chuan Tin 5 hmun aia zau lo neite leh leilet tin 2.5 aia zau lo neite sawina a ni.
- **Shifting JhumLand:** Tlangram lo neihna atana theh thin ram.
- **Shop:** Dawr, thil engpawh zawrhna tihna a ni;
- **Stall:** Dawrte deuh tihna a ni.;
- **Tax:** Sawrkarin Mizoram chhunga chengte hnenah (District council area chhunga awmte tiam lohvin) Mizorama an awm man a lak thin emaw, in leh lo an neih vanga chhiah a lak thin emaw, mi hnena in an luah hawh tir avanga chhiah a lake maw hi a ni.
- **Temporary Impact:** Hna thawh hunlaia hnathawh vanga harsatna thleng thei, vaivut khu te, leivung te, khawl khu te, khawl nghawr nasa ang chite hi a ni.
- **Tenant:** Mi hnen atanga man chawia an ram emaw, in emaw hman/luah saktu tihna a ni.
- **Tribal:** President of India in Article 342(1) of the constitution of India hmanga thupek a tihchhuah a Mizoram mi diktak a tarlante hi an ni.
- **Unauthorised Occupation of Land:** Eng phalna mah nei lova ram luahtu/neitute hi Encrocher emaw Trespasser (Phalna lova ram neitu) tih an ni, Mizoram (Prevention of Government Land Encroachment) Act, 2001 dan hmangin heng mite hi an ram luah atangin um chhuah/hnawhchhuah theih an ni. Tin, heng mite hnen atang hian chhiah engmah lak loh tur a ni bawk. Mahse tun project bikah chuan an dinhmun thlirin tanpuina awm thei angte pek ve theih an ni ang a, an thil neihte sawn chhuak turin mumal taka hriattir ve bawk tur an ni.
- **Village/Village Council/Village Council President:** Khawtlanga thuneitu sawrkar dan hmanga thlan te/Khua tihna a ni. Kan hrethiam vek awm e.
- **Vulnerable Households:** Chhungkaw ngaihsak ngai zualte: i) Below Poverty Line (BPL), ii) Hmeithai, iii) Schedule Castes, iv) ram nei lo (small and marginal farmers), v) Kum upa ho

(Kum 60 chung lam), vi) Fahrah vii) Rualbanlote(rilru emaw taksa lamah emaw), ram neitu, an ram an laksak avanga ram mumal nei ta lote.

- **Wage earner:** Project thawhna tur laia mi hnuaia inhlawhfa thin, ram an lak dawn avanga an hna chan turte sawina a ni. Heng mite hian an dinhmun tihchianna lehkha felfai tak an nei ngei tur a ni.

5.5 Entitlement Matrix

The entitlement matrix has been developed in accordance with the principles adopted and analysis of initial identification of project impacts. It provides measures for different categories of impacts and project affected persons(See **Table 4**).

Table 3 – Entitlement Matrix				
Engnge an chan/hloh tur	Tu luahlai nge/Tu ta nge	Tu in nge dawng ang	Engnge an dawn tur	An thil dawn theih chipchiar
Cultivable land	Settlement Holder	Family/ Household	Compensation hi a ram ang chiah hmun dangah lei dawn se engzat nge a sen dawn tih chhut chungin pek tur a ni a, tanpuina dang pawh pek bawk tur a ni.	<p>a) Ram, a victims te ram tluk pui a awm a nih chuan compensation atan pek tur a ni a. Ram a awm lo a nih chuan ram hu tawh pawisa pek an ni ang. A ram hlut zawng hi sarkar in committee a din, special committee in a bithliah ang.</p> <p>b) b) Compensation pek tur a special committee in a bithliah hi Collector-in a ram hlutna nia a bithliah aia a san chuan Collector bithliah zat kha Compensaton anga pek tur a ni a, a baka a sanna hi assistance ang a la pek belh theih a ni.</p> <p>c) Ram kan lak bang hi minimum economic holding aia a tlem chuan , project affected person in a hnuaia mi ah hian duh a thlang thei ang -</p> <ul style="list-style-type: none"> • Ram an laksak chin hlutna phu tawh compensation a la ang a, ama ram chhung, kawng laihna atan a lak ve loh chin chu aman a luah/enkawh ang. • A ram la bang pawh a surrender duh chuan a puma laksak tur a ni ang. • Ram neitu hian compensation atan ram kher a phut anih chuan ram hi pek theih a ni ang. (Ram leitur dang a awm chauhin he thil hi tih theih a ni). <p>d) Resettlement allowance Rs. 50,000.00 zel hi ram kan laksak ho, ram veka kan comensate loh hote pek tur an ni.</p> <p>e) Subsistence grant, thla khatah Rs. 3,000.00 zelin thla ruk chhung pek tur an ni (vawi khatah pek theih an ni)</p> <p>f) Kan ram laksak in ram lak bang nasa taka a tih chhiat tel chuan compensation atang a 10% hi la pek belh theih a ni ang (A awmzia chu kan ram lak avanga an ram kha a lai takah a bun a, tun hmaa thil awlsam taka tih theih tuna harsa zo ta vek a awm chuan tanpuina pek theih an ni ang. .</p> <p>g) Ram neitu te hnen ah an thlai leh thing leh mau te seng hawi tur in thla 4 hma ngei in notice pek tur a ni a, notice hi pek an nih loh chuan compensation pek nawn leh tur an ni.</p>
	Periodic Patta Holder/ Temporary Village Pass Holder		Assistance	<p>a) Ram lak man ah ram vek a theih chuan pek tur a ni a, a theih loh erawh chuan a replacement value,special committee ten an bithliah angin pek tur a ni.</p> <p>b) Ram neitu te hnen ah an thlai leh thing leh mau te seng hawi tur in thla 4 hma ngei in notice pek tur a ni a, notice hi pek an nih loh chuan compensation pek nawn leh tur an ni..</p> <p>c) Subsistence grant Rs. 3,000.00 zelin thla ruk chhung pek tur an ni.</p>

Table 3 – Entitlement Matrix

Engnge an chan/hloh tur	Tu luahlai nge/Tu ta nge	Tu in nge dawng ang	Engnge an dawn tur	An thil dawn theih chipchiar
Non-agricultural vacant land (Homestead, Commercial and others)	Settlement Holder	Family/ Household	Compensation at replacement cost and assistance	<p>a) Ram, a victims te ram tluk pui a awm a nih chuan compensation atan pek tur a ni a. Ram a awm lo a nih chuan ram hu tawk pawisa pek an ni ang. A ram hlut zawng hi sarkar in committee a din, Special Committee in a bithliah ang. Tin , hmun dang a ram leina hi LA Act hnuiaia compensation pek zat tur bithliah aia a san chuan a project hian a sanna zawng hi assistance angin a pe ang.</p> <p>b) One time resettlement allowance Rs. 50,000.00 hi assistance anga pek bawk tur an ni.</p>
	Periodic Patta Holder/ Temporary Village Pass		Assistance	<p>a) Ram, a victims te ram tluk pui a awm a nih chuan compensation atan pek tur a ni a. Ram a awm lo a nih chuan ram hu tawk pawisa pek an ni ang. A ram hlut zawng hi sarkar in committee a din, special committee in a bithliah ang. Tin , hmun dang a ram leina hi LA Act hnuiaia compensation pek zat tur bithliah aia a san chuan a project hian a san na zawng hi assistance angin a pe ang.</p> <p>b) Subsistence grant Rs. 3,000.00 zelin thla ruk chhung pek tur an ni.</p>

Table 3 – Entitlement Matrix

Engnge an chan/hloh tur	Tu luahlai nge/Tu ta nge	Tu in nge dawng ang	Engnge an dawn tur	An thil dawn theih chipchiar
Structure (Residential, Commercial, Residential-cum-Commercial)	Settlement Holder /Periodic Patta holder Village Pass holder	Family/ Household	Compensation for structure at Replacement Cost plus assistances	<p>a) Mimal in tih chhiat tur ah chuan schedule of rate thar ber hmanga estimate siamin an in ding lai tiat sak theihna tur ctanpuina/insakna pek tur a ni.</p> <p>b) Compension an lak hnu ah in thiah sak tur an nih pawh in thla 2 tal thiat tur a tih na notice lo pek lawk tur an ni.</p> <p>c) In thenkhat, a khawimaw lai thiat a, a bang la luah theihthe chu an in thiah sak hlutna zat bakah an in thiahsak hlutna 25% an bang pin leh nan pek belh leh tur an ni.</p> <p>d) An in chak/ren te hi a neitu ten an senghawi vek thei ang.</p> <p>e) In a pumpuia thiah sak ngaite chu a hnuiaia mi ang hian tanpuina pek tur an ni ang.</p> <ul style="list-style-type: none"> • Kum khat chungh inluah man tur thla khatah Rs.3,000/- ang zel a chhut in pek tur an ni. • An in sawn chhuahna senso (Transportation Cost) Rs.50,000/-pek bawk tur an ni. • One time resettlement allowance Rs. 50,000.00 zel pek tur an ni. • An in leh lo an chhuahsan avangin thla khatah Rs 3000 hlawh anga chhutin kum khat chungh an hlawh tur pek tur an ni. • Electric connection te, water supply te, leh thil dang a buaipuina tur senso atan Rs.7,500/- pek bawk tur a ni.
Loss of land and/or structure	Occupant of land and/or structure without valid Pass, Patta or Permit	Family/ Household	Assistance	<ul style="list-style-type: none"> • Ram: • Ram neitu te hnenah an thlaite senghawi tur in thla 4 inpuahchahna hun pek tur an ni. Notice hi pek an nih loh chuan compensation a pangai ang bawk a pek leh tur an ni ang. • In <ul style="list-style-type: none"> a. An in ang chiah an sak leh theihna tur sum pek tur an ni. b. Chak zawng zawng an khawm vek thei ang. c. Lump sum Shifting allowance of Rs.15,000 d. In an thiah hmain thla 2 tal notice lo pek lawk tur a ni.
Loss of Plants/Trees,	Owner/ Occupant	Family/ Household	Compensation	<ul style="list-style-type: none"> • As per Notification dated January 24th, 2011 of Revenue Department (Special committee in a tul angin a siam rem bawk ang).

Table 3 – Entitlement Matrix				
Engnge an chan/hloh tur	Tu luahlai nge/Tu ta nge	Tu in nge dawng ang	Engnge an dawn tur	An thil dawn theih chipchiar
etc.				
Bawng in, ar in, vawk in etc.	Owner	Family/ Household	Compensation	Di in tan Rs. 600 per sq.m, rangva chung nei a nih chuan Rs. 1000 per sq.m .
Loss of residence/ commercial unit	Tenant	Family/ Household	Assistance	a) In luah man an pek lawk zat emaw an pek lawk atang a an in luah man la bang pek tur an ni (Hei hi a in neitu chan atanga cut leh tur a ni). b) Hmun danga an in luah man tur (Rental allowance) thla tin Rs. 3,000/- thla 12 chhung c) Lumpsum shifting allowance Rs. 15000/-
Loss of kiosk	Owner/ Occupant	Family/ Household	Assistance	a) Lumpsum shifting allowance Rs. 7500/- b) A chak/ren zawng zawng a neitu in an khawm vek thei ang.
Loss of employment	workers/ employees within commercial units	Family/ Household	Assistance	a) Thla thum chhung Minimum wage rate in an hlawh pek tur an ni.(Thla 1 ah ni 25 hna thawk ang a chhut in). b) Project construction work ah an thawh awm a awm chuan hna siam sak tur an ni. c) Rs. 20,000/- vocational/skill improvement atan ruahman sak tur an ni..
Loss of Livelihood (losing commercial unit, losing agricultural land and with balance land below MEH)	Settlement Holder/ Periodic Patta holder/ Village Pass holder	Family/ Household	Assistance	a) Project construction work ah an thawh awm a awm chuan hna siam sak tur an ni. b) Rs. 20,000/- vocational/skill improvement atan ruahman sak tur an ni..
Additional support to vulnerable groups	Settlement Holder / Periodic Patta holder/ Village Pass holder	Family/ Household	Assistance	Sum lak luhna hnar thar an siam theih nan Economic Rehabilitation Grant Rs. 25,000/- pek tur an ni.
Loss of CPR	Village	Village	Compensation at	Vantlang thil ah pawh Replacement value pek ve tho tur an ni a, sum te hi mipuite

Table 3 – Entitlement Matrix				
Engnge an chan/hloh tur	Tu luahlai nge/Tu ta nge	Tu in nge dawng ang	Engnge an dawn tur	An thil dawn theih chipchiar
(Jhum land/Fallow land)	community	Community	‘replacement value’	inrawn tlangin khawtlang thatna atan sum pek chhuah atanga thla 6 chhungin hman tur a ni.
Loss of Common Property Resources (Structures, etc.)			Enhancement of community resources.	Vantlang thil tih chhiat a nih chuan a awm sa aia chhe lo din thar lehna tur siam sak tur a ni a, an mamawh dan angin thil thar diai pawh siam sak theih an ni ang ¹ .
Loss of Access	<u>Village Community</u>	Village community	Alternate access	An step, foothpath etc 250 m chin siam that sak leh tur a ni.
Temporary and unforeseen impacts.	Affected Entity	Family/ Household/ Village community	mitigation in line with principles in the SMF	Hnathawh lai a hriat lawk loh thil hnathawh vanga a lo awm in, uluk tak a verify a nih hnu ah a tuam damdan SMF zulzui in zawn nghal bawk tur a ni.

5.5.1 Ram/thlai/in leh lo hlut zawng chhut dan tur:

Ram/thlai/in leh lo hlut zawng chhut dan tur chu a hnuai ami ang hian a ni ang:

Note 1

- (i) Sorkarin zangnadawmna a pek tur zat hi Special Land Acquisition Officer (SLAO), Project Implementation Unit (PIU), PWD in Collector a nih avangin a bithliah ang a. SLAO, chuan ram inleina tharlam tak awmte leh thildang hlutna te ngaihtuah chungin zangnadawmna a pe thin tur a ni.
- (ii) A Special Committee hi sawrkarin Notification dated 23rd August 2013 hamngin a din tawh a, he committee hian Replacement Value hi a hnuai ami ang hian chhutchhuah ang:
 - a. Ram pakhata kum thum kalta chhunga an tharchhuah hlut zawng chu pathumin sem tur a ni a, chu chu sawmhnihin punter leh tur a ni;

OR

 - b. Ram inleina tharlam te an en ang a, a ram rem leh rem lohte ngaihtuah chungin a hlutna an bithliah ang.

Heng a chung a kan tarlan te pahnih zinga a sang zawk zawk hi Replacement value a ngaih/pawm tur a ni a. Tin, dan hnuai SLAO-in compensation a bithliah aia an sang zawk a nih chuan a sanna zawng chu tanpuina anga pek tur a ni. Tin in leh thildang te chu BSR thar ber hmangin an hlutna chhutchhuah tur a ni a, a hlui tawh a nih pawhin a thar ang thlapa ngaih sak tur an ni. Thlai pawh chutiang tho chuan Govt-in rate a neih thar ber hmanga an hlutna chhutchhuah thin tur a ni.

5.5.2 Thil pawimawh dang zawm ngei turte:

- Mimal ta bik ni lo vangtlang thilte e.g Vangtlang ram a paltlang tur atana compensation chu 5.5.1 Note 1 (ii) angin pek thi tur a ni a. Heng sumte hi mimal tan ni lo, vangtlang tana thil tangkaitur siam nan khawtlang hruaitute nen inberawnin hman thin tur a ni.
- **Preparation of Micro Plan:** Project Authority ten PAP te tan identity cards siamin PAP te verify an nih hnuah an pe ngei tur a ni a, hemi buaipui hna hi RIPDP Supporting Agency ten an thawk ang. Micro plans hi PAP tinte tan siam tur a ni a, Vangtlang ho thil tihchhiat siam lehna tur atan pawh buatsaih bawka ngai a. Micro planah hian an thil tihchhiat zat, eng chiah nge chhia, leh an dawn tur zat a chuang ang. Micro plan hi RIPDP buapui tura support agency ten an buaipui ang a, ttihneituten an approve hnuah hman tur a ni ang. Tanpuina reng reng hi Cheque hmangin emaw, PAP te Bank account ah Direct transfer-in emaw pek tur a ni a, a sum fai chuan Rs, 5000 hnuailam chauh (VCP te hriatpuinain)pek theih a ni ang. PAP ten an sum dawn zatah lungawilohna an nei a nih chuan Grievance Redressal Committee (GRC) kaltlangin chinfel tur a ni ang a. GRC ruangawm hi Institutional arrangements (**Section 12**)-ah tarlan a ni.
- Zangnadawmna leh tanpuina dang reng reng hi ram/in/thlai laksak hmian a neitute hnenah pek fel vek tur a ni a, ram neituten an ram chu tanpuina an lak rualin engmah buaipui chhunzawm tur awm lovin an hlan tur a ni. (Dahkhaw emaw leibat thil engemaw awm lovin). Ba an nei a nih erawh chuan rulh sak in compensation amount atangin ba rulhna chu deduct leh tur a ni ang.

6.0 SIA leh R&IPDP buatsaih chungchang

He project hnuai hna thawh tur reng rengah mipui a nghawng dan tur zirchianna mumal Social Impact Assessment (SIA) neih hmasak vek tur a ni a, Tin, state chungah mipui cheng tam berte hi tribal an nih avangin chhawmdawlina hna thawhsak turte pawh Tribal mipuite an ni lo thei lova, churang chuan an hnam nun hrethiam tak chungin hna thawh tur a ni. mipui a nghawng dan tur zirchianna mumal Social Impact Assessment (SIA) report ah reng reng mipa leh hmeichhe thliarhranna tur thil te, miretheite nekchepa an awm lohna tur tein ruahmanna siam tur a ni. Tin, HIV/AIDS chungchangte pawh that akin tarlan tur a ni a, lirthei khalhtute tana fimkhur dan tur chungchang te, mipui huap inrawnkhawmna hunt e mipui tam berin neitru an put theih nana hmalakna turte pawh tarlan vek tur a ni..

Tin, Resettlement and Indigenous Peoples Development Plan (R&IPDP) hi kawng sial tur tinte tan a hran theuhin buatsaih tur a ni a, a nghawng tha lo hrang hrangte chu lehkhabuah chuan tarlangin chung harsatna leh nghawng tha lo thleng thei te sutkiandan tur te pawh tha taka tarlan tur a ni. R&IPDP buatsaih nan hian Census and socio-economic surveys (mipui a nghawng dan tur zirchianna mumal) tak neih vek tur a ni a, heng survey te hi kawng kalna tur tihchian a nih veleh neih nghal tur a ni. He survey-ah hian chhungkaw pakhat mihring awmte leh an chanchin kimchang te, an sakhua te, an sumleh neihdan te, an in leh lo dinhmun te, an pass neihdan te, an ranvulh leh thil dang tul thei nia lang apiangte tarlan tur a ni a, an thil chan tur zat pawh chiang taka tarlan tur a ni ang. Vangtlang thil a khawihchhiat tur te leh a chhiatdan tur kimchang te pawh survey neih chhung hian tihchian nghal bawh tur a ni. Socio-economic survey-a an survey form hman thin chu thil tel a ni(Annexure-I en rawh)

SIA and R&IPDP hi mipui engzat pawh nghawng dawn se a nghawng tur mipuite zirchian vek hnuah buatsaih tur a ni a, mipuite hmuh theih turin an khuaah theuh hna thawktu turte hna pek an nih hma thla 4 aia tlem lo la awm lain tlangzarh a, pek bawh tur an ni. R&IPDP chuan heng te hi a kengtel ang.

- ◆ Project chanchin tlangpui
- ◆ Buatsaih a nih chhan leh a buatsaih dan
- ◆ Mipui vangtlang nun leh an sum leh pai dinhmun.
- ◆ Hnathawhtur hrang hrangte
- ◆ Nghawng chhia a neih tlem dan tur ruahmanna
- ◆ Project in aghawng tur chhungkuate nun leh an sum leh pai dinhmun
- ◆ Project nghawng tur zirchianna
- ◆ Mipuite biakrawnna
- ◆ An in leh lo din that sak leh dan tur
- ◆ A enkawltu/khawihtu lam
- ◆ Mipui hmaa tlangzarh tur te, inbiakrawnna leh anmahni ngei an tel ve dan tur ruahmanna.
- ◆ Lungawilote thawi dam dan tur
- ◆ Hna vildan leh a endik dan tur
- ◆ Hnathawhdan tur hun bithliah
- ◆ Eizawna dinthar lehna leh an sum lakluhdan tur
- ◆ Hmeichhiate dinhmun siam thatdan tur.

◆ Sum hman tur zat

MOEF atanga EIA clearancelak nan SIA and R&IPDP te hi a tul dawn a. Chuvangin draft SIA and R&IPDP te chu World Bank-ah ennawn turin thehluh tur a ni.

7.0 Hmeichhia leh mipa te inkar zirchianna

Hmanlai chuan mizo chhungkuaah mipa an thu em em thin a, hmeichhiaten thu an nei tam lo thin hle. Chuvang chuan hmeichhiate inchhung sekrek khawih leh lo lama an tih tur pangai bak an ti tam lo hle a. A bak, ram chhuah leh thil dang zawng zawng chu mipa hna a ni deuh vek thin. Mahse chutianga hmeichhe nekchepna chu tunlai changkannain a rawn tibo chho ta zel a. Chungkuaah pa ber chu hotu ber ni mah se hmeichhiate hian engmah enhranna an tawk tawh lo a, an dinhmun hi a tha tawh hle a ni.

Mizoram hi India hmarchhakah hmeichhia leh mipa dinhmun inthlauhna chungchang an zirchianna (Gender Development Index) ah a dinhmun tha berah kan ding a, GDI value and is placed in the first rank among the north eastern states. Mipa leh hmeichhia ziak leh chhiar thiam inthlauhna pawh India ram pumah 16.68 a nih laiin Mizoramah chuan 4.32 chauh a ni. Zirna sang zirpha chin zingah phei chuan Mizoram chu 2.6 % chauh a ni a, India chu 3.2 a nit hung. Hmeichhe hnathawk zat tehna (Female work participation rate) atang hian hmeichhiate dinhmun leh eizawnaa an inrawlh ve dan a chiang khawp ami. Hemi chungchangah hain thingtlangah mipa eh hmeichhe inthlauhna hi 15.3 a nih laiin khawpuiah 20.3 a ni a, Sex ratio (975) pawh ram pum average (940) ai chuan a la tha zawk hle a ni. Hmeichhiate ram rorelna Assembly member-a thlan an nih chungchangah chuan sawi tur a tam lo hle a, 1987 hnu lamah phei chuan thlan tlin an awm leh tawh lo a ni.

Mizoramah chuan hmeichhe hna thawk hmuh tur an tam em em a, kawngdung tuanin an awm thin a ni. Hmeichhiate hian dawr ngah te leh sumdawna tam zawk hi anmahniin an buaipui a, mipate erawh chuan hna hram zawk an thawk tlangpui a ni. Hmeichhiate en hniamna engmah hmuh tur a awm meuh lo. Tin, hmeichhe zingah zuk leh hmuam tih a lar hle a, tin incheina chungchangah te, lenvah chungchangte engmah enhranna a awm lo a ni. Nupa inthen a tam viau a, inneih leh pawh chutiang bawkin. Mipa ten inchhungah thuthlukna pawimawh siam deuh ber mah se, hmeichhiate dinhmun that lamah chuan Mizoram India ram pumah hi a ber tih theih a ni.

Survey neih lai khan hmeichhe tam takte chuan inchhung khawsaknaah anmahniin thu an titlu ve thei tih an sawi a. Sum leh pai chungchangah te, hriselna lam thilah te, ro sum chungchangah te, bungraw lei chungchangah te, naupangte zirna chungchang thlengin thu an nei niin an sawi. Chuvangin project hna a taka thawh hunah pawh hmeichhiate thui tak an inrawlh ve ngei ang tih hi a rin lawk theih a ni. Hmeichhiate irawlhngaina tura rinlawk thilte chu:

- R&IPDP Implementation Agency team tinah hian hmeichhia pakhat tal investigator/facilitator tel ngei tur a beisei a ni.
- Ram, thlai leh in leh lo tihchhiat turte hi rualkhai taka zangnadawmna pek tur a ni.
- PIU in hmeichhia leh mipa te hi intluktlang takin a enkawl tur a ni a, engemaw a huho a thawh chi a awm a nih pawh in hmeichhia thliarhranna a awm tur a ni lo.
- R&IPDP Implementation Agency ten hmeichhia leh mipa te hnenah identity card siam sak in bank account pawh hmeichhe hming in an hawng ve tur a ni a. Tin,

compensation pawh hmeichhe hming in an pe ve bawk tur a ni (nupa an nih chuan joint account an nupa hming in hawn tur a ni).

- Eizawna thar dap sak chungchang ah pawh hmeichhe pawl te a bik taka duhsak tur an ni.
- Implementing Agency te hian training leh thildang, khawtual mi te thiamna ti pung thei tur an buatsaih thin tur a ni a, eizawna a taka bul an tan thlengin an vil tur a ni.

Khawtlang sum leh pai dinhmun chawi kang tur in khawchhunga sel-help group awmsa te a theih anga tanpui bawk tur an ni a. Tin, heng group te hi sawrkar scheme MGNREGA, PMGY, leh financial institution, NABARD leh Co-op Banking societies te nen tang tlangin hmasawna hna a theih chin chin ah thawh tir tur a ni.

- Hna vil leh endik laiin mipa leh hmeichhia te kar siam lo zawng in hna kalpui tur a ni a, hnathawh dan report kimchang tak lak khawm a, kalphung thlak a ngai a nih pawh in inthliarna awm lovin mipa leh hmeichhia te en tur a ni.

8.0 Tualchhung sumdawna leh eizawna chungchang:

Ram buai hnu lawk khan Mizoram thingtlang khaw tamtak te chu sawikhawm an ni a. Mizoram mipui za ah sawmriat lai chu an inleho te chhuahsan tir in khawthar ah an in benbel tir a. Hei hian hmun hrang hrang ah mipakhat tana ram awm zat (land-man ratio) a khawih danglam nasa em em a. Mi tamtak pheii chuan an mahni khaw pangngai ah an kir leh phah hial a ni. Khua te hi kawngpui tlawh pawh theih chin ah sawikhawm an ni deuh tlangpui a, chu chu remchang a la in mipui te pawh in dawrte te an siam a, an thlai thar leh mipui te mamawh thildang an zuar thin a ni. Hun a kal zel a heti zawng a sumdawna hi uar chhoh deuh deuh zel a ni a, lo neih a hlawk teh chiam loh avangin dawr siam a eizawng an thahnem tawh hle a ni. Kawngpui chu awm lo se heng sumdawna te hi a kal thei dawn lo a, chuvangin kawngpui zarah mi tam takin eizawna an neih theih phah a ni.

Tun project hnuaiia kawng laih tur te pawh hi trade kawngpui tur a duan an ni a, Chuvangin siam an nih hnu chuan mi tam tak te eizawna ti awlai zawk tur leh thingtlang kilkhawr zawk a cheng te tan pawh hmun dang nen a inkalpawhna awlsam zawk petu a nih ngei a rinawm.

Kawngkal dan tur chungchang mipui te nena inbiakrawn na ah mipui ten an khaw pawh lova kawng kal tur an hriatthiam loh thu hmun tam takah ngaih thlak a ni a. An eizawna in nasa takin a tuar dawn ni in an sawi bawk. Mipui ten he project hi an pawm a lungawi taka hnathawk tute an lo dawnsawn theih nan leh rilru a neitu nihna thinglung an neih theihnan an ei leh bar zawna kawng ah a theih ang a tanpui an tul dawn a ni. He project hnuaiiah hian mipui ten a hma aia tam zawk thlai leh thildang an lo thar a, eizawna tha zawk an lo neih theih nan hmalak pui tum a ni a. Survey neih a nih hnu ah mipui te dinhmun chawisanna tur kawng hi duan a ni ta a ni. An ei leh bar dinhmun chawisang tur hian nasa taka zir a ni a. Chutichuan a hnuaiia hna te hi he project hnuaiiah tho hian kalpui ve ni se tih a lo ni ta a ni.

1. Kawngin a paltlang tur khaw tinah hian market shed sak ni se tih a ni a, mipui ten an thil thar chhuah tha taka an hralh theih nan.
2. Self-help group/common interest group te tan heng hna te hi thawh tur a thlan a ni bawk-

- a) Champhai to Zokhawthar kawnga awm khua te ah self-help group/common interest group te din in puantah leh puan thui te kalpui tum a ni.
- b) Khaw tinah vawk leh ar vulh tur.
- c) Serthlum/rubber nursery te Chhumkhum to Chawngte road leh Lunglei-Tlabung-Kawrpuchhuah kawngin a paltlang tur khua ah te siam tum a ni bawk.
- d) Mipui ten an eizawna kawnga hlawk zawk leh tha zawk a hna an thawh theih nan training mumal tak neihpui tum a ni.

Hemi chungchanga hriatbelh duh nei te chuan Annexure 2 en tur a ni.

9.0 HIV Awareness leh a vendan tur:

Kawngthar laih a nih reng reng in tumlawk loh leh beisei loh thil ken tel a nei ve thin a. Hnathawktu leh khualzin, mahni chhungkua te chhuahsan a reitak zin thin te nen khawsakho loh theihloh chang a awm thin. Heng mi te hi mipa an ni tlangpui a, reitak an chhungte an chhuahsan/awmbo san thin avangin mipat hmeichhiatna kawngah insum reng harsa an tih chang a awm thin. Hei hian a ram luahtu mipui te leh a khualzin te ngei inkarah hri thalo nasa takin a ti darh thei tih hriat a ni.

Hetiang chiah hian kan kawng laih tur ah pawh hnathawktu te leh mipui te tan HIV a hma zawng aiin inkaichhawn a hlauhawm dawn a. Hei vang hian he thil hi uluk taka en a, mipui te leh hnathawktu te hnenah HIV chungchang tha taka inhrilhfiah a tul dawn a ni. Hemi atan hian YMA te, MHIP te, Truck Owner Association te leh pawl dang a remchang apiang ten en thawk hovin mipui te hrilh hriat hna thawh tur a ni ang.

March 2013, ah khan Mizoram pumah mi 7850 in HIV an pai ni a chhinchhiah a ni a, an zinga 63% chu mipa an ni. HIV kai 92.5% te chu kum 15-49 inkar a mi te an ni a, naupang kum 14 hnuai lam 4% an awm bawk. Kum 50 chunglam 3.76% an ni a, naupang kum 14 chin HIV kai zingah 51.4% chu hmeichhia an ni. Raipuar 0.47 % in HIV hrik an pai tih hmuhchhuah a ni bawk a, National AIDS Control Organisation (NACO) in a chhinchhiah dan in Mizoram ah AIDS vanga thi mi 306 an awm tawh a ni.

HIV darh zel tur veng tur hian a hnuai mi ang hian hna thawh tum a ni.

Hnathawktute hnen a HIV chungchang hrilhhriat leh anmahni ngei pawh midang te hrilh hre thei tur a buatsaih.

Hna pawimawh hmasa ber tur chu hnathawktu hrang hrang, PIU, Contractor, Management leh Supervision Consultant hnuaiia thawktu hrang hrang te hrilhhriat hmasak a ni. Hei hian midang te hnenah HIV chungchang hrilhfiahna tur in a pui dawn a ni.

HIV buaipui mek tute nena thawh ho

HIV buaipui mek tute nen thawhhona tha tak siam tum a ni a, Mizoram State AIDS Control Society (MSACS), Technical Support Units (TSU), District AIDS Prevention and Control Units DAPCU and People Living with HIV (PLHIV) network ten en inrawn khawmin hmalak

dan tur sawiho tur a ni ang. An ni nena thawhho hian technical lamah pawh nasa takin min pui thei dawn a ni.

Contractor te hnenah hna pekna lehkhah pawh HIV chungchang ziah lan a ni ang.

Contractor te nena inremna angin an hnathawktute hnenah HIV chungchanga awareness neih a nih theih nan ruahmanna an siam ang a. Contractor in hemi atan hian a tul angin hma a la ve ang a, a hnathawkte pawh an telve theih nan hun a siamsak thin ang .

Hemi chungchang hi Annexure 3 ah kimchang zawk a tarlan a ni a, hriatchian duh nei chuan en tur a ni. Tin, HIV/AIDS darh zel tur venna atana sum mamawh hi R&IPDP budget ah telh vek a ni.

10.0 Mipuite biakrawnna chungchang:

World Bank OP 4.10 ah chuan , “zalen takin, mipuite hnenah a hun leh hmun chiang tak hrilhin anmahni biakrawnna hun hman thin tur a ni. Hei hian mipui ten an duhdan leh ngaihnan an pholanna hun a siamsak mai bakah an tihtheih ang tawk ti thei tur in a tanpui bawka ni”, a ti a. Hei vang hian hna thawh hma leh thawh lain mipuite mamawh hrang hrang te hre turin consultation mumal tak neih thin tur a ni a. Hei hian mipuite rilru ah mahni ta anga en thei turin a tanpui dawn a ni.

Mipuite biakrawnna hun hi Project kalpui tirh te ah neih tan tur a ni a, hna tak tak thawh a nih hnu ah pawh an hriat tur ang te eng mah zep lovin hrilhhriat thin tur a ni. Khawtlang hruaitu VC te emaw, sawrkar atangin emaw PAP te hnenah thil pawimawh zawng zawng hrilh thin tur a ni a, zangnadawmna zat tur te, an inlehlo din thatna tur chungchang te pawh a kim in hrilh tur a ni.

Mipuite biakrawnna leh inhrilhriatna hun hi kalpui reng tur a ni a, hnathawh hma, thawh lai, endik leh a that leh that loh finfiah lain neih ngei ngei tur a ni. Social Development Specialist, PIU a thawk chuan kum khatah wawi li, thla thum danah wawi khat zel inbiakrawnna hun a buatsaih thin ang a, a hnuai tarlan te hi tih ngei ngei ngai te an ni.

- project kalpui dan tur kimchang leh a nghawng tur te ,
- survey neih chhan,
- a nghawng hrang hrang atana tanpuina awm thei
- inrawnkhawmna leh mipuite an telve theih dan tur ruahmanna,
- an inlehlo tundin leh dan tur chungchang
- lungawilo te thawidam dan tur
- hnathawh dan tur hun bitukna chungchang,
- sawrkar lam leh tualchhung thuneitute mawhphurhna
- in dinglai atana zangnadawm dan tur duhthlanna
- Chhawmdawlna hnathawh dan tur kimchang tar lanna, NGO, Special Committee leh grievance redressal committee nihphung leh an mawhphurhna.
- Chhungkua te thiamthil ti pung tura training chungchang te, zangnadawmna an hman dan tur chungchang te leh eibar zawna dinthar leh dan tur chungchang.
- Endik hna thawktute thawh dan tur leh PIU hnenah rawtna an thlen dan tur chungchang.,

Mipuite biakrawn dan tur kimchang takin ruahmanna siam tur a ni a, heng te hi kawng laih tur hrang hrang atana R&IPDP bu ah te kimchang taka telh vek tur anni .

Mipuite hnena hriattur pawimawh hriattir nan hian notice board te, pamphlet te, lemziak te, vantlang inkhawm hlimawm te, postcard, phone leh SMS hmangete in mipuite hnenah puanzar thin tur a ni.

Heng inkhawm hrang hrang te hi uluk leh tha takin documentation neih tur a ni a, thlakakte, thurel chhinchhiah chungchang te pawh uluk taka kalpui tur a ni. Inkhawmna hmun, a hun leh mipuite hnena thil pawimawh hrilhhriat chi hrang hrang te tha taka chhinchhiah hi tih ngei ngei tur a ni. Tin, R&IPDP ah chungte chu thil tel vek tur a ni a, mipuite hriattirna pek dan chungchang te pawh fel taka ziah luh vek tur an ni. Hemi chungchang hi kimchang zawkin **Annexures 4a and 4b** ah te tarlan a ni.

11.0 Information Disclosure

The Right to Information Act, 2005 hnuaihia India khua leh tui ten sorkar hnen atanga thil hriat duh an neih te a hun dik tak chhunga hriattir hi sorkar mawhphurhna a ni a. Tun a kan project kalpui mek ah pawh hian mipui ten an hriat duh ang an hriat theih nan leh langtlang taka hna thawh a nih theih nan ruahmanna siam tur a ni. Langtlang zawka hna thawh a nih theih nan Central Information Commission leh State Information Commissions te pawh sorkar in a din hial a. Chuvangin langtlang taka kan hnathawh mipui in an hriat theih nan PWD website ah mipuite hnena information an dil ang petu tur te, Draft SMF te tarlan tur a ni a. Tin, PWD hian a hnuaihia mi te hi mizo tawnga let chhuakin an website ah an tarlang bawk tur a ni..

- SMF pumpui
- R&IPDP bu (Draft leh Final) ,
- Project in a nghawng tur mipuite leh thil tihchhiat tur list

R&IPDP bu leh project in a nghawng tur mipuite hming leh an thil chhe tur te hi mizo tawngin lehchhuah vek tur a ni a, a nghawng tur khua hmun remchang laiah/Village Council office, PWD office leh District Administration office ah te tlangzarh tur a ni.. He project hnuaihia kawng thenkhat, environmental clearance lak ngai bikah te chuan EP Act 1986 in a sawi angin environmental clearance lakna tura document pawimawh te tlangzarh bawk tur an ni. Tin, heng lehkhah te hi PWD website ah leh GoMand World Bank (Infoshop) ah te tarlan tur a ni a, mipuite hnen atanga rawtna leh an duhdan an thlen te chu final document ah tarlan tel tur an ni.

Final document peih a nih hnuin draft document te thlak nan PWD website ah leh World Bank website ah tarlan tur an ni a. Tin, project in a nghawng tur mipui, tanpuina dawng thei tur te chu anmahni khua theuh ah an hming leh an dawn theih zat tur kimchang nen VC te tanpuina in an hming tarchhuah tur a ni bawk a ni. Tin, tanpuina dawng tur mipuite hi District Administration office ah leh PIU office ah te an hming tarlan bawk tur an ni.

Hna thawh anih tak tak hunah mipuite hnenah hna thawhin a thil tihchhiat te, zangnadawmna leh dinmun pangngai a an din leh theih na tura tanpuina awm ang te anmahni tawng ngeiin Resettlement Leaflet siam in an khua ah hrilffiah thin tur an ni.

12.0 Institutional Arrangement

PIU (State) level ah leh kawng mal bik atan te Resettlement & Indigenous Peoples Development Plan (R&IPDP) bu a ruahmanna awm te tha taka kalpui a nih theih nan a buaipui tur mi tha taka ruat/ruahman tur a ni a. Hemi atan hian PIU ah land acquisition leh R&IPDP hneh taka buaipui tur mi dah tur a ni.

12.1 PIU (State) Level

Project Director: The Project Director, PWD, Govt. of Mizoram hi R&IPDP kalpui dan tur ah a hotu ber a ni anga. A hnenah hian sum leh pai chungchang te, administrative power te pek a ni anga, he project hnuaiia hna hrang hrang te hi a enkawlna hnuaiia an awm ang.

Thawktu mamawh zat dah chungchang ah hian PIU, PWD a land acquisition, R&IPDP implementation leh khawtlang mipui harsatna sutkianna tura mihring ngai zat dik tak dah te a huam tel a. The Project Director hi SLAO in a pui ang a, SLAO hnuaiia hian AE/SDO Resettlement and Rehabilitation Manager (RRM) leh technical staff engemaw zat an awm bawng ang. Social Development Specialist (SDS) te pawh chhawr tur an ni a, anni hian Project Director a tul angin an pui thin ang. PIU hian training te, mipuite hrilhhrat leh kaihhruai te, SMF anihna takin kalpui a ni em tih te an chian ang a, duhthusam lo a awm anih pawhin mawh an phur ang. Social Development Specialist hian land acquisition chungchang te, mipuite eizawna leh inlehlo dintharlehna tura (rehabilitation and resettlement) chungchangah Project Director hnenah thil pawimawh awm apiang hriattirin a tanpui thin ang. Project Director hian SLAO, designated RRM leh SDS te tanpuina in mipuite tanpuina tur ruahmanna awm te dik leh tha takin a kalpui tur a ni .Social Development Specialist mawhphurna chu a hnuaiia mi ang hi a ni ang :

- ◆ SLAO chu land acquisition chungchang ah a tanpui anga, a theih phei chuan ram neitu ten en inberem tlanga hna thawh a nih theih nan hma a la ang.
- ◆ Mipuite biakrawn hunah a nghawng tur mipuite tha taka an tel theih nan hma a la ang a, R&IPDP final bu chhuah a nih theih nan hma a la ang.
- ◆ R&IPDP hi kawng mal tin tan buatsaih tur a ni a, chungte chu SMF a tarlan angin khaw tinah tlangzarh tur a ni. Hemi atan hian a tul angin hna a thawk thin ang.
- ◆ R&IPDP implementation agency te a tuartu mipuite dinhmun siamthat leh kawngah leh HIVvenna tura an hmalakna ah a kaihruai ang.
- ◆ R&IPDP implementation agency te hmaichhan ngei ah an harsatna a sawipui ang a, field visit te a hunbi dikah neiin amah ngeiin mipuite harstana a hmunah a ngaithla thin ang.
- ◆ Mipuite dinhmun siamtha leh tura hna hrang hrang atana pawimawh data a lakhawm ang a, harsatna sutkian dan tur kawng a dap thin ang.
- ◆ LA leh R&R chungchangah harsatna neite a hmunah a pui thin ang.
- ◆ Sorkar department hrang hrang te a tul hunah R&IPDP kalpui nan a be rawn thin ang.
- ◆ Mipuite harsatna tawh hrang hrang te, vantlang thil tihchhiat te mipuite tana hna tangkai thawh sakna tur atan te sum a tul ang zat dah a ni em tih a enfiah ang a, a tul angin a buaipui thin ang.
- ◆ R&IPDP budget te hi mipuite hnenah a hun dik takah pek chhuah anih theih nan a buaipui ang.

- ◆ R&IPDP kalpuidan a endik thin ang a, a tul angin a vil ang.
- ◆ Hna dang tul thar a awm chuan a thawk bawk ang.
- ◆ Mipuite zalen takin an duh zawng an sawina hun, consultation neih a nih theih nan hma ala ang a, hetiang hun a rorel thu leh hla te record fel tak a siam ang a, thlalak ten en that akin a vawng ang.
- ◆ R&IPDP kalpuidan hi third party audit a awm theih nan hma a la ang.

Special Land Acquisition Officer: Special Land Acquisition Officer³ (SLAO) hi Govt. of Mizoram in Project Implementation Unit (PIU), PWD a awm tura a dah a ni a. A hnuaiah hian amah pui turin AE, Resettlement & Rehabilitation Manager (RRM) an tih te an awm bawk a. Anni hian SLAO chu mipuite ram lak chungchangah leh a tuartu mipuite dinhmun siamthat lehna kawngah an pui ang. Tin, SLAO hnuaiah hian Junior Engineer leh Surveyor te amah pui turin dah bawk tur an ni .SLAO mawhphurhna hrang hrang te chu:

- ◆ LA Act, 1894 hnuaiah kawng laihna tura ram lak ngai te a hun takah a la fel ang.
- ◆ Mipui ten ram lak chungchanga sawi duh an neih te hunbi thlih chhungin a ching fel ang.
- ◆ Ram lak tur chungchang hi Official Gazzette ah leh chanchinbu pahnih ah a tichhuak ang;
- ◆ Zangnadawmna zat hi Government approval a hmuh hnu ah open court ah a tlangzarh ang.
- ◆ Zangnadawmna a sem ang;
- ◆ Ram neitu te hnen atangin ram a laksak ang a Project thu neitu te hnen ah a hlan ang;
- ◆ Special Committee sorkarin a din ah member secretary a ni bawk ang.

12.2 Kawng laihna hmunah:

R&IPDP a taka kalpui a nih ytheih nan kawng laihna hmunah site Office hawn tur a ni a, chu office chu Resettlement & Rehabilitation Manager (RRM) ten an thutchilh ang. RRM te hian R&IPDP hi that akin kalpui a ni em tih an vil thin ang a, Project Director chu a tul ang angah an pui thin ang.

Resettlement and Rehabilitation Manager te mawhphurhna:

- ◆ R&IPDPtha taka hunbi tiam chhunga kalpui a nih theih nan hna an thawk thin ang.
- ◆ R&IPDP implementation agency te nen harsatna that akin an sawiho thin ang.
- ◆ Hna thawna hmunah a kal fo tur a ni a, hna that akin kalpui a ni em tih a finfiah tur a ni.
- ◆ Mipuite ram laksak chungchang leh chhawmdawlna dangte a hun dik takah dik leh tha taka sem a nih theih nan hma an la ang.
- ◆ Mipuite chhawmdawlna chungchangah biakrawn an ngaih hunah District Administration leh Department dangte a berawn thin ang..
- ◆ Mipuite hnenah Entitlement matrix a semchhuak ang.
- ◆ Project vanga turatumipuite Identity Card siamsak chungchangah a tul angin hma a la ang..
- ◆ Implementing Agency ten tanpuina semdan tur chungchanga mipuite an biakrawn hunah amah ngei a tel ve thin ang.

³The SLAO has been delegated the powers of Collector by the Notification dated 1 August 2013, Revenue Department, Govt. of Mizoram.

- ◆ PAP thenkhat, survey neih laia tel lo, mahse a taka tuar ngei site PAP list-ah an tel theih nan hma a la ang.
- ◆ R&IPDP implementation agency ten micro plan an siam ngei em tih a chian ang a, hotu lu ten an pawmpui theih nan a pui baw ang.
- ◆ PAP ten an dawn tur zat dik tak an dawn ngei theih nan hma a tu angin a la ang.
- ◆ VC membrete awm lain tanpuina sem chhuah ngei a nih theih nan hma a la ang.
- ◆ Mipuiten leirem an rah leh theihna tur kaihhnawih meetingah a tel thin ang..
- ◆ PAP ten Joint Account an hawn theih nan hma a lakpui ang.
- ◆ R&IPDP kalpuidanah Monthly Progress Report (Financial leh Physical) a buatsaih ang a, PIU-ah a thehlut thin ang.
- ◆ Hna a taka thawh a nih hma ngeiin a tuartu mipuiten zangna dawmna leh tanpuina an dawn ngei theih nan hma a la ang.
- ◆ Mipui vangtlang thilte thiah an nih pawhin a dinthar leh nan hma a la ang..
- ◆ Mipuite chenna hmun thar buatsaih sak an nih theih nan hma a la ang(Compensation sum aia inhmun pek an duh zawk chuan).
- ◆ Grievance Redress Committee meeting leh R&R chungchang meetingah te a tel ve thin ang.
- ◆ Project hnuai mipuite eizawna kawng dapsakna torah PAP te an tel ngei theih nan hma a la ang a, Sorkar leh Department dang biakrawn an ngaih hunah pawh a berawn thin ang.
- ◆ PIU lamin R&R chungchanga tih tur an tuk dang apiang a thawk thin ang.
- ◆ PIU hnenah R&R chungchanga information pek ngai apiangte a pe thin ang
- ◆ PAP zingah hmeichhia leh mipa inthliarhranna a awm loh nan hma a la ang..

12.3 R&IPDP Implementation support Agency/NGO

R&IPDP a taka kalpui a nih theih nan kawng lah tur tinah PIU, PWD chuan Non-Government Organisation (NGO), R&R lama thioamna neite a ruai ang a. Inrawihna tur thuthlung, Terms of Reference (ToR) chu Social and Environment consultants ten an buatsaih ang. NGO/ Implementation Agency te hian RRM ten en tangtlangin hna an thawk ang a, PIU-ah report an pe thin ang. An sum mamawh turte pawh PIU lamin an buaipui ang. An hnathawh tur tlangpuite chu:

- ◆ R&IPDP implementation agency te hi a tuartu mipuite leh PIU, PWD te inkara awm, an inzawmna an ni.
- ◆ PAP te nen inpawh tlang taka hna thawh a nih theih nan boruak tha tak an siam ang..
- ◆ RRM ten en hna tha taka thawh a nih theih nan an tangtlang ang.
- ◆ R&IPDP a a lan angin PAP te hi a takin an finfiah vek ang.
- ◆ Mipuite hnenah an hriat tur ang an hriat theih nan hna tan a nih vele Information Campaign an kalpui ang..
- ◆ Socio-economic survey neih laia hmaih palh PAP te thun an nih leh thaih nah ma an la ang..
- ◆ PAP hmaih palh te an verify ang a, RRM in rem a tih hnuah tanpuina dawng thei tur zingah an thun lut ang.
- ◆ PAPs te, Village Councils, leh sorkar office thenkhat, Project Area chungah awmte tan

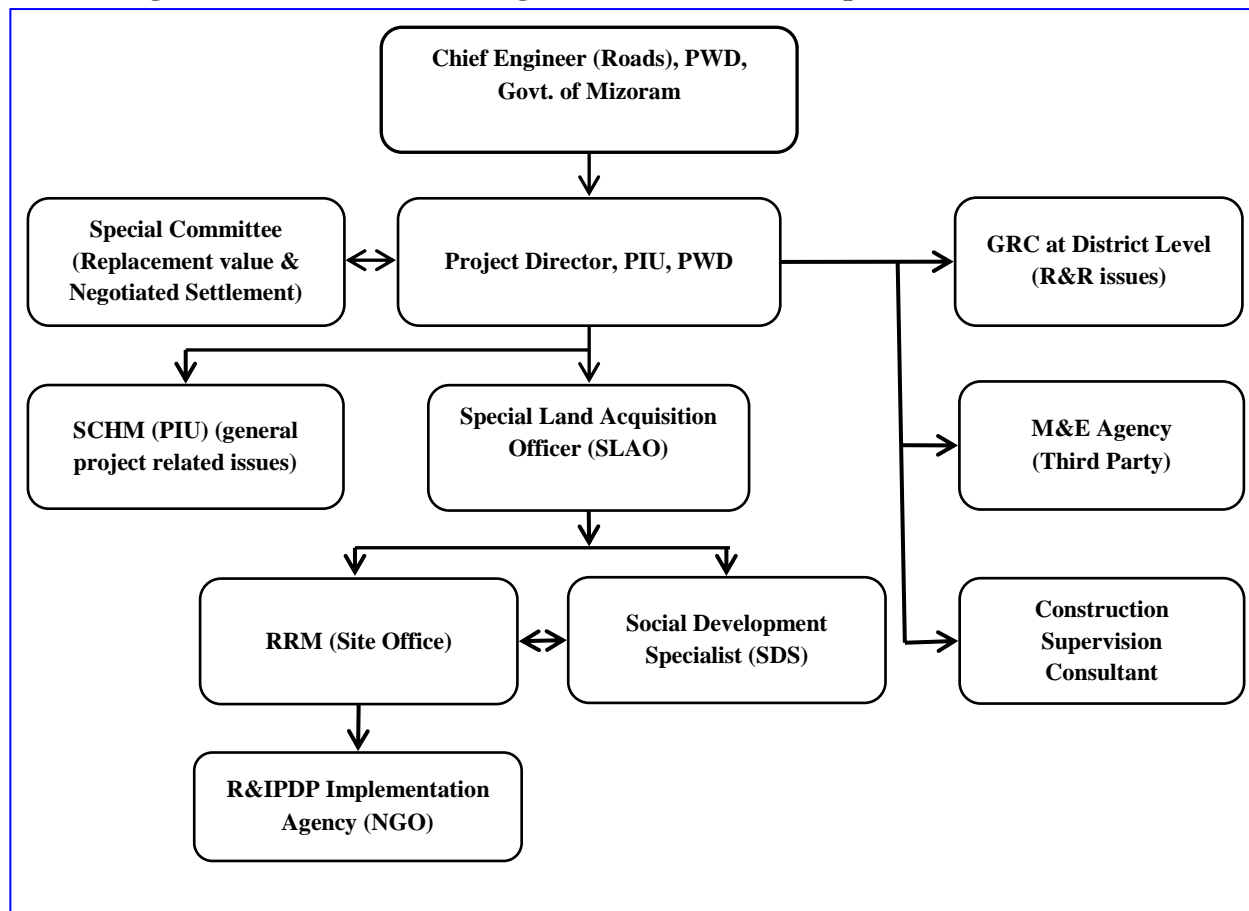
lekhhabu te, tanpuina an dawn dan tur kimchang chuanna leh Project hna tlangpui tarlanna an sem chhuak ang.

- ◆ PAP te tan an thlalak chuanna Identity Card an siam ang a, an sem chhuak bawk ang.
- ◆ Tanpuina dawng thei tur mite (EPs) leh Vangtlang thil tihchhiatte siam that a nih leh thaih nan a hranin Micro-Plan an siam ang.
- ◆ Micro-plan te hi RRM hnenah enfiah turin an theh lut ang a, chumi hnuah PIU-ah approval an la le hang.
- ◆ PAP ten a chhungkaw hminga Bank-ah Joint Account an hawn dawnin an pui ang..
- ◆ PAP ten tanpuina an khua ngeiah an dawn theih nan ruahmanna an siam ang..
- ◆ Compensation leh R&R chungchangah harsatna awm thei tur lakah PAP te an tanpui ang.
- ◆ Grievance Redressal Committee (GRC) te hnenah PAP lungawi lohna neite an hrui ang a, an lungawi lohna neihte chin fel a nih theih nan hma an lakpui ang..
- ◆ PAP ten en tanpuina pekdan chungchanga inbiakrawnna a khat mawi tawkin an buatsaih tur a ni.
- ◆ PAP te hi an in leh lo dinthar lehna kawngah an tanpui ang.
- ◆ PAP te hi in hmun leh dawr hmun tur pek chungchangah an pui ang (PAP zingah pawisa aia ram duh zawk an awm chuan).
- ◆ PAP te nen in leh lo din thatna tur ram thlan chungchangah leh hmeichhiate enhran bikna a awm loh nan an berawn fo tur a ni.
- ◆ A tul a nih chuan engemaw laia PAP te lo chen lailawkna tur an buaipui ang.
- ◆ Eizawna thar an dap dan tur kawngah PAP te an berawnin tanpui an ngaih hunah an tanpui thin ang..
- ◆ Eizawna mumal a tuartuten an neih theih nan training pawimawh an buatsaih ang a, a tul angin hmanruate pawh an ngaihtuah vek ang.
- ◆ PAP te thiamna tipung thei zawnga training an huaihawt ang.
- ◆ HIV natna a darh zel lohnan mithiamte thawhpuiin a tul angin hma an la ang..
- ◆ Vangtlang thil tihchhiatte siam that a nih leh theih nan VC te berawnin a tul angin hma an la ang.
- ◆ PWD-in meeting a huaihawtah an kal thin ang.
- ◆ RRM hnenah Monthly Progress Report an pe thin ang a, PIU-ah a copy an pet el thin ang..
- ◆ R&IPDP hlawhtling taka kalpui a nih theih nan thawh tur tul awm apiang an thawk bawk ang.

12.4 Construction Supervision Consultant

PIU, PWD in kawng laih hna thawh dan endik turin Construction Supervision Consultant (CSC) a ruai ang a. Anni hi hnathawhna hmun ah awm ve in hnathawh hrang hrang te bakah R&IPDP kalpui dan an endik thin ang. An zingah hian R&R lama mi thiam pakhat tal a awm ve tur a ni a, hnathawh chungchang ah harsatna eng pawh a awm chuan PIU hnenah report rang takin a pe thin ang. CSC te hian thla thum danah an endik dan report an pe tur a ni a, hemi karah pawh hian a tul angin PIU ah report an pe thin bawk ang. PIU leh a hnuai a thawktu hrang hrang tea w m dan tur hi a hnuai ah hian tarlan a ni e

Figure 1: Institutional Arrangement for R&IPDP Implementation



12.5 Special Committee

Special Committee hi kawngpuiin a kaltlang tur khaw tin ah PAP ten an thil chan hlut zawng bithliah tura sawrkarin a din a ni a. Special Committee ah hian Project Director, PIU, PWD; SLAO; Nodal Officer, R&D Cell, Environment & Forest Department; Department hrang hrang ; Agriculture, Horticulture; Minor Irrigation Deputy Commissioner aiawh te , Village Council President leh Secretary te; PAP aiawh mi pahnih leh YMA aiawh te an tel bawh ang. Special Committee hi ram laksak tur neitu ten en inbiakrem kawngah thuneihna thui tak pek an ni bawh.

13.0 Training and Capacity Building

Project hnuuia thawktute tan training leh capacity building chungchanga hmalak hi he project hian a ngaipawimawh hle a. Training neih ngai chi hrang hrang te hi PIU ah finfiah a ni ang a, training na hmanrua tur hrang hrang te leh an zirtur thil te pawh hnathawh anih atanga thla ruk chhungin buatsaih fel vek tur a ni. Training ah chuan heng te hi ngaih pawimawh tur a ni:

- R&IPDP tha taka kalpui a nih theih nan a thawktu te an mamawh thiamna pek,
- Mipuite hnena thil pawimawh puanzar dan tur te, hmanraw mamawh chungchang te, a thawhdan tur leh fel taka hna kalpui dan tur chungchang,
- Training pe tur ten an training pek tur ah fel leh tha tak , a dawng tur mipui ten an hriatthiam theih ngei tur training an pek theih nan a anmahni chher.

A thawktu te leh mipui ten R&IPDP tha taka kalpui a nih theih nan a an mamawh thiamna an neih theih nan PIU in training tha tak an duang chhuakin an kalpui tur a ni a. Heng training atana ruahmanna siam a nih hnu ah a rang thei ang berin tualchhung leh ram pum huap a hetiang training pe thin tut e nen tang tlangin training hi kalpui tur a ni. PIU in training pek tur chungchanga India ram a institution ten training an pek theih te an chian ang a, chutiang zulzui chuan trainingpawh kalpui tur a ni. Training atan hian sum mamawh tur te finfiah in Institutional Arrangement head hnuaiyah budget fel tak siam tur a ni.

Training leh Capacity building chungchanga ruahmanna chu a hnuaiyah mi ang hian siam a tur a ni:

Table 5 – Topics for Training and Frequency	
Training Topics	Frequency
Social management (khuh hawnna, a thilken tel hrang hrang, R&IPDP thil tum leh tihur hrang hrang)	Ni 2 kum khat atan
Mipuite dinhmun zir chianna data, data lakkhawm dan te endik dan kalphung te	
Mipuite tuamdang dan tur leh a kaihnawih dan thil te	A kum khatna ah vawi 2, a hnu ah kum tin vawi 1
A tuartu ten ngai an awh leh dan tur kalphung	Ni 1 kum khat atan
Mipuite vui vaina thawidam dan	Kum khatah vawi 2
Progress Reporting and participatory monitoring	Kum khatah vawi 2
Hmeichhe dinhmun chawisan chungchang	Kum khatah vawi 1
HIV/AIDS leh hnathawktu te himna	Thla thum dan ah
Ei leh bar chungchang leh thiamna tipung thei tur chungchang	Ni 1/tum 1
Lirthei a kal te himna chungchang	Ni 1/tum 1

14.0 Mipuite lungawilohna thawidam dan chungchang (Grievance Redressal and Complaints Handling Mechanism)

14.1 Grievance Redressal Mechanism

Mipuite vui vaina chinfel sak turin Grievance Redressal Committee din tur a ni a. Hemi in a tum ber chu mipuite lungawilohna/vui vaina a chin chhuaka ngaihthlak saka, a theih ang kawng kawng a lungawi taka siam a ni. Tin, hemi hnuaiyah hian a lungawilo mipuite tel ngeiin an harsatna te chin fel thin tur a ni. Mipuite harsatna hi kawng thum in chin fel thin tur a ni.

Pakhatna : An lungawi lohna an theh luh in a hmunah ngei kal a endik thin tur a ni a, hetah hian sum leh pai hman a la ngai lo. Endik hna hi RRM leh NGO consultant te, VCP emaw a aiawh emaw leh PAP lungawilo ten an endik ho thin ang. PAP hnenah a lungawiloh thu dawn atanga ni 7 atanga ni 10 chhungin a harsatna chin fel pui turin hma lak ngei tur a ni. An enfiah hnu a an thil hmuh ang te uluk taka chhinchhiah in GRC hnenah ngaihtuah atan an thehlut thin ang.

Pahnihna: State PIU level ah SLAO in Project Director rawn chungin a ching fel ang.

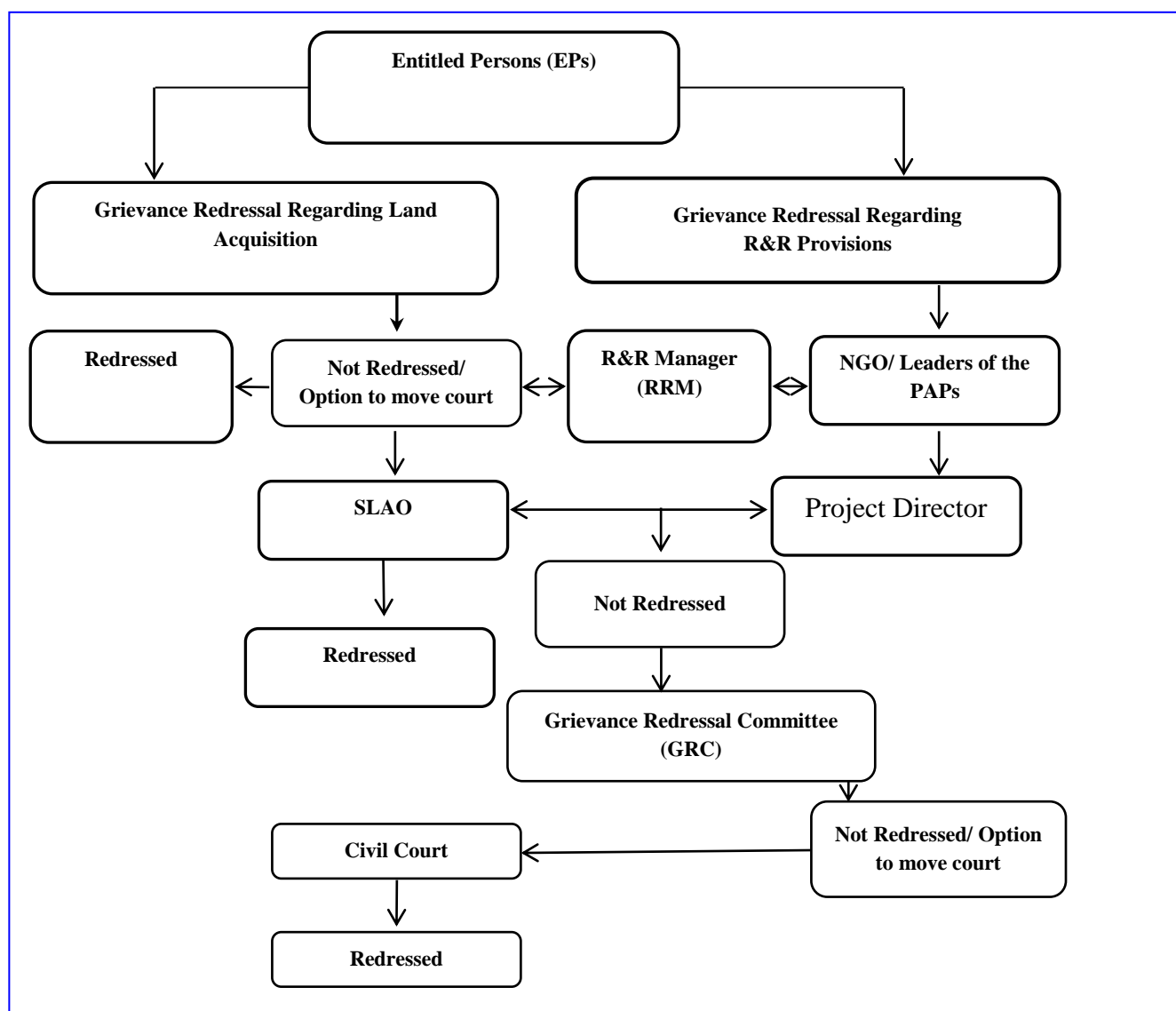
Pathumna: District level ah sawrkar in GRC siam turin notification a ti chhuak ang a. He GRC ah hian Additional Deputy Commissioner chu Chairman a ni ang a, Project Director, PIU te,

SLAO te, RRM te, VC aiawh te, PAP te leh NGO consultant te an tel ang. GRC hnenah hian Ngo consultant ten PAP telungawi lohna hi an thlen thin ang a, theihtawpin an lungawi lohna chinfel a nih theih nan an tanpui thin ang. GRC hian report a dawn atanga ni 7 chhungin chinfel dan tur a ngaihtuah pui tur a ni a, ni 15 danah an thukhawm thin ang. Mipuite lungawi lohna hi ni 30 chhungin chinfel sak ngei tur a ni a. Tin, GRC thuchhuak hian ram neitu lungawilo te an lungawi lohna thu court hma ah an thlen a dal loving. GRC hnathawh tur te chu:

- PAP te lungawi lohna an lo dawngsawng ang a, an record fel thlap ang a, a hmasak dan indawt in an ngaihtuah thin ang.
- A hmunah te kalin an endikthin ang a, a neitu te a hmun ngeiah biain an harsatna an ngaithla thin ang a, khawtlang hruaitute an berawn thin bawk ang.
- Mipuite harsatna ni 30 chhunga chinfel a nih theih nan hun fel takin an bithliah thin ang.
- PAP te hnenah NGO consultant te kal tlangin an harsatna dinmhum dik tak an hrilh thin ang.

Project atana Grievance Redressal Mechanism chu a hnuai ami ang hi a ni:

Fig. 2 – Grievance Redressal Mechanism



14.2 Rawtna leh vuivaina dawnsawn dan tur:

Right to Information Act, 2005 hnuaiah hian khua leh tui ten sawrkar thuneitu te hnen atanga hriat duh an neih te an hriat theih nan danin dikna chanvo a pe a. He dan hnuaiah hian "public authority" (a body of Government or "instrumentality of State") te chuan an hnathawh chungchanga zawhna mi in an zawh reng reng ni 30 chhungin chhanna an pe ngei tur a ni. Tin, he dan hnuaiah hian sawrkar hnathawk te chu zawhna an dawn ang te leh an chhanna te fel taka record a, computer ah chhinchhiah thlap a, a tul huna mipuite hnena puangzar thin turin thupek an ni bawk. Tichuan, he dan hnuaiah hian khua leh tui tu pawhin an thil hriat duh te zalen takin sawrkar thuneitute hnenah an zawt thei a ni. Amaherawhchu, hmun tam takah mipui ten he dan hi an hmanh tangkai tawk lova, hna lian leh pawimawh zual tih lovah phei chuan an hmanh lar lo fo. Tuna kan project kalpui tur hi mipui khawih em em project a nih dawn avangin mipui ten thil hriat duh tam tak an nei ngei dawin a lang a. Chung an thil hriat duh te tha taka an hriat theih nan PWD chuan PIU ah leh hnathawhna hmunah te Suggestion and Complaint Handling Mechanism (SCHM) a siam ang a. SCHM hian project atana land

acquisition (mimal ram lak) leh mipuite chhawmdawl hna chungchang kimchang tak hi PIU ah leh GRC ah te a hriattir ang a. Mipuite harsatna leh hriat duh te hrilh hriat leh sutkian sak an nih theih nan man chawi ngailo telephone te, mipuite harsatna thlenna tur email bik te, internet kaltlanga zawhna/rawtna/ lungawiloh thu an thlen theihna tur te, chutiang atana ruahman bik complaint box te a remchan dan angin a siamtur a ni. Hemi chungchang hi Annexure 5 ah tarlan a ni.

15.0 Monitoring and Evaluation (M&E)

Hna endik leh vil chungchang hi project hian a ngai pawimawh em em a. Mipuite chhawmdawl hna leh tanpuina hna hrang hrang te pawh hi uluk taka amawhphurtu bik ten an vil leh endik thin tur a ni. Hemi atan hian R&IPDP bikah chuan endik dan tur tehfung fel tak duan a ni a chung te chu :

- i) Anih tur angin project hnathawhna tur tul te dah a ni em: sum hmanral chungchangah te, thawktu awm zatah te.
- ii) Thawhchhuah lam : zangnadawmna pek zat, inbenbelna thar pek zat, training buatsaih zat, sum leh pai hmanga tanpuina pek zat chungchang te.
- iii) A nghawng chhiat chungchang: hun rei zawk atan mipuite a nghawng dan tur chungchang.
- iv) Lungawilohna leh vuivaina dawn zat leh chinfel zat.

Heng tehfung te hi a hmanng tu tur ten an awlsamzawk nan number hmanga pek tur an ni a. Hnathawh that dan te, a tam lam te engkim fun vek tura duan a ni. Heng tehfung zingah hian PAP compensation pek zat te, mimal in an dawn kim leh kim loh te, tanpuina pek hnu ah an dinhmun a tha zawk em tih chungchang te engkim tarlan tur a ni. Lungawilohna nei te harsatna chinfel zat te, thubuai chinfel loh court a thlen zat te pawh tarlan tur a ni. Tehfung hmasa pahnih te ah hian hnathawh nan a sum leh thil dang hman zat chungchang leh chumi in a a thawhchhuah zat te tarlan an ni a, he thil hi project thuneitu te hna thawh chungchanga hmasawna/thawhchhuah zat hriattirna tur a ni. Tin, hnathawh kawngah engemaw harsatna avanga hna a muangchan leh harsatna awm theite hrilhhriat nan a tangkai hle ang. Hna endikna atanga thil hmuhchhuah hrang hrang te chu a hun dik takah World Bank hnenah theh luh thin tur a ni a, endikna ah hian mipuite pawh an telve theih nan ruahmanna siam bawh tur a ni. Tichuan hnathawh hrang hrang te leh chung atanga hlawkna awm hrang hrang te hi R&IPDP hnuaiah pawh tha taka neih reng tur a ni.

PIU, PWD hian internal monitoring a kalpui bawh tur a ni a, NGO leh RRM ten he hna ah hian PIU te an tanpui thin ang a, an endik leh enfiahna atanga an thil hmuh te chu World Bank ah thla thum dan zel ah an report thin ang. Tin, quarterly report tin te hi PWD website ah tarlan thin tur a ni bawh a ni. External agency (third party) ten project hna thawh lai hawl ah leh thawh zawh hnuah evaluation (anihna tur angin hna thawh a ni em tih enfiahna) an nei ang a, a hmunah kal in hnathawh hrang hrang te ; mipui biakrawna chungchang te, HIV venna tur a hnathawh hrang hrang te leh a dangte pawh an endik thin ang. Monitoring report ah chuan R&IPDP kalpui dan chungchang kimchang takin a chuang tur a ni a, harsatna awmte a tarlang ang a, chutiang a awm chuan PIU in a sutkian dan tur a ngaihtuah nghal ang. Hun laihawl aevaluation ah chuan hnathawh tawh china harsatna leh duhthusamlo lai te tarlangin a sutkian dan tur tarlan tur a ni ang a. Hnathawh zawh hnu a enfiahna ah erawh chuan a nghawng hrang hrang te zir chiangin R&IPDP vanga mipui ten hlawkna an hmuh leh an thil tih hrang hrang te

project achievement report a telh turin zirchian tur a ni. Evaluation atan hian endikna tur thil ruahman sa (defined impact indicators) hmangin hnathawh te enfiah tur a ni a. Heng te hi a ngai pawimawh hle tur a ni (i) Hlawhtlin dan (harsatna te tarlang chungin): land acquisition chungchangah te, mipui ten inlehlo an din thar dan chungchang ah te, eizawna thar an neih leh dan chungchang te tarlan tur a ni., (ii) lungawi lohna/vuivaina thu dawn chungchang te leh chin fel zat te kimchang taka tarlan baw k tur a ni.

Quarterly Monitoring te Mid and End-term Evaluation report te hi World Bank ah ennawn leh tur a thawn thin tur a ni. Endikna chungchang report dan tur hi Annexure 6 ah tarlan a ni

16.0 Resettlement Budget

Resettlement budget ah hian ram, in leh lo, thing leh mau, thlai, in leh lo dinthar leh nan a tanpuina hrang hrang, vantlang thil tihchhiat sakthat leh na tur sum te, a thawktu te sum mamawh te, R&IPDP implementing agency te chhawr man te, endik leh enfiah tu (M&E consultant) te chhawr man te a tel a.

A tuartu mipuite tuamhlawmna tur sum mamawh hrang hrang, land acquisition hnuaiia zangnadawmna te leh tanpuina dangte hi project costs pumpui ah telh vek an ni a. LA leh R&R atana sum hman te hi Govt. Of India sum atanga pek tur a ni a, a dang consultant rawihna te, training huaihawtna senso te, HIV/AIDS venna tura sum hman te, NGO rawih man te, monitoring leh thil dang te hi World Bank sum atanga pek leh tur an ni.

17.0 Revision/ Modification of SMF

SMF hi document tharlam tak a ni a, chuvangin a tul angin siam danglam theih reng a ni. Tumlawk loh leh hriat lawk loh thil thleng avang te, hnathawh dan kalphung thlak avang te a thil thar a awm anih chuan SMF ah hian thun lut in telh thar tur an ni. Tin, World Bank lamah emaw, India sawrkar lamah emaw Mizoram sawrkar hnuaiia emaw dan thar , kan hnathawh tur nghawng tur a awm anih pawhin chung thil thar mil chuan SMF hi her rem tur a ni ang. Tin, hnathawh tan hunah thil tha zawk leh awm ang zawk hmuh chhuah thar anih chuan chungte pawh chu World Bank leh PWD, Govt. Of Mizoram te inberawnin SMF hi tihdanglam theih a ni ang. SMF tidanglam tur chuan World Bank phalna lak hmasak a ngai baw k a ni. is an “up-to-date” or a “live document” enabling revision, when and where necessary. Unexpected situations and/or changes in the project or sub-component design would therefore be assessed and appropriate management measures will be incorporated by updating the SMF to meet the requirements of applicable legislations and Bank safeguards policies. Such revisions will also cover and update any changes/modifications introduced in the legal/regulatory regime of the country/ state. Also, based on the experience of application and implementation of this framework, the provisions and procedures would be updated, as appropriate in consultation with the World Bank and the PWD, Govt. of Mizoram. Any changes to the SMF will required to be cleared by the Bank.